

Rudge

Motor Bicycles

REPAIRS & SPARES

1910

1924



By Appointment
Cycle Makers to
H.M. KING GEORGE.

Rudge-Whitworth Ltd.
Makers of
Bicycles, Motor Bicycles,
Steel Balls & Ball Bearings,
Detachable Motor Car Wheels,
COVENTRY, BIRMINGHAM, LONDON

Repairs and Spares.

Foreword.

IN compiling this list it has been our endeavour to illustrate all parts so far as is possible in their actual position, or to indicate the position they occupy in the various assemblies. In many cases it is necessary to use two index numbers in order to differentiate between parts suitable only for Multi or Chain Driven Models, but the descriptions given in the printed matter will always enable our customers to furnish us with particulars sufficient to ensure correct supply of their requirements.

The spare parts illustrated on the following pages are of current pattern, but the descriptions and index numbers will serve for our earlier models, provided that customers, when ordering, always quote the number of the engine (stamped on back of crankcase), also the registered number of the Bicycle (stamped on seat lug of frame) in addition to the index number of the part required.

The prices quoted do not include the cost of postage, packing or carriage, therefore customers are asked to make allowance for these when sending cash with order.

It is our invariable rule not to supply spare parts until after receipt of a remittance to cover their cost and carriage. When cash does not accompany the order an advance invoice, showing the cost of the parts required, will be sent to the customer and the order held in abeyance until cash is received.

Where it is anticipated that this invoice will cause delay and inconvenience we would recommend our customers to open a small credit account with us. A deposit of, say, £2 would allow of orders being dealt with by return and the delay of an advance invoice avoided. Goods will be invoiced out as supplied and a statement of account rendered periodically.

It is requested that customers taking advantage of this system should always reference their letters "Deposit Account" (Dept. F.M.). If on Tour mention Town of home address.

Complete Motor Bicycles or parts for repair must in all cases be consigned carriage paid, fully addressed to Rudge-Whitworth, Ltd. (Dept. M.C.), Coventry, and bear the name and address of the sender. A letter of advice giving full particulars of repairs required should also be posted at the same time.

Unadvised articles will lie here at Senders Risk.

By the term "overhaul" we understand that the Motor Bicycle or Engine is to be completely dismantled, and all worn or broken parts renewed. Therefore estimates for this class of work cannot be submitted until the Bicycle or Engine has been taken down for examination. In the event of our estimate not being accepted, it is distinctly understood that the cost of taking down and re-assembling is payable by the customer. In most cases this cost will not exceed £4.

All accounts for repairs are Strictly Nett Cash against Invoice.

Crates and cases used in the packing of spare parts or repairs are charged and are not returnable.

All goods are forwarded carriage paid but the cost of carriage will be included in our invoice.

This catalogue cancels all previous issues, and we reserve the right to alter the prices quoted without notice as manufacturing conditions may demand.

Telegrams: "RUDGE, COVENTRY."

Telephone: 1104 (Nine lines).

**Rudge-Whitworth Ltd.,
COVENTRY.**

l
m

No. 6.

499 c.c. ENGINE.

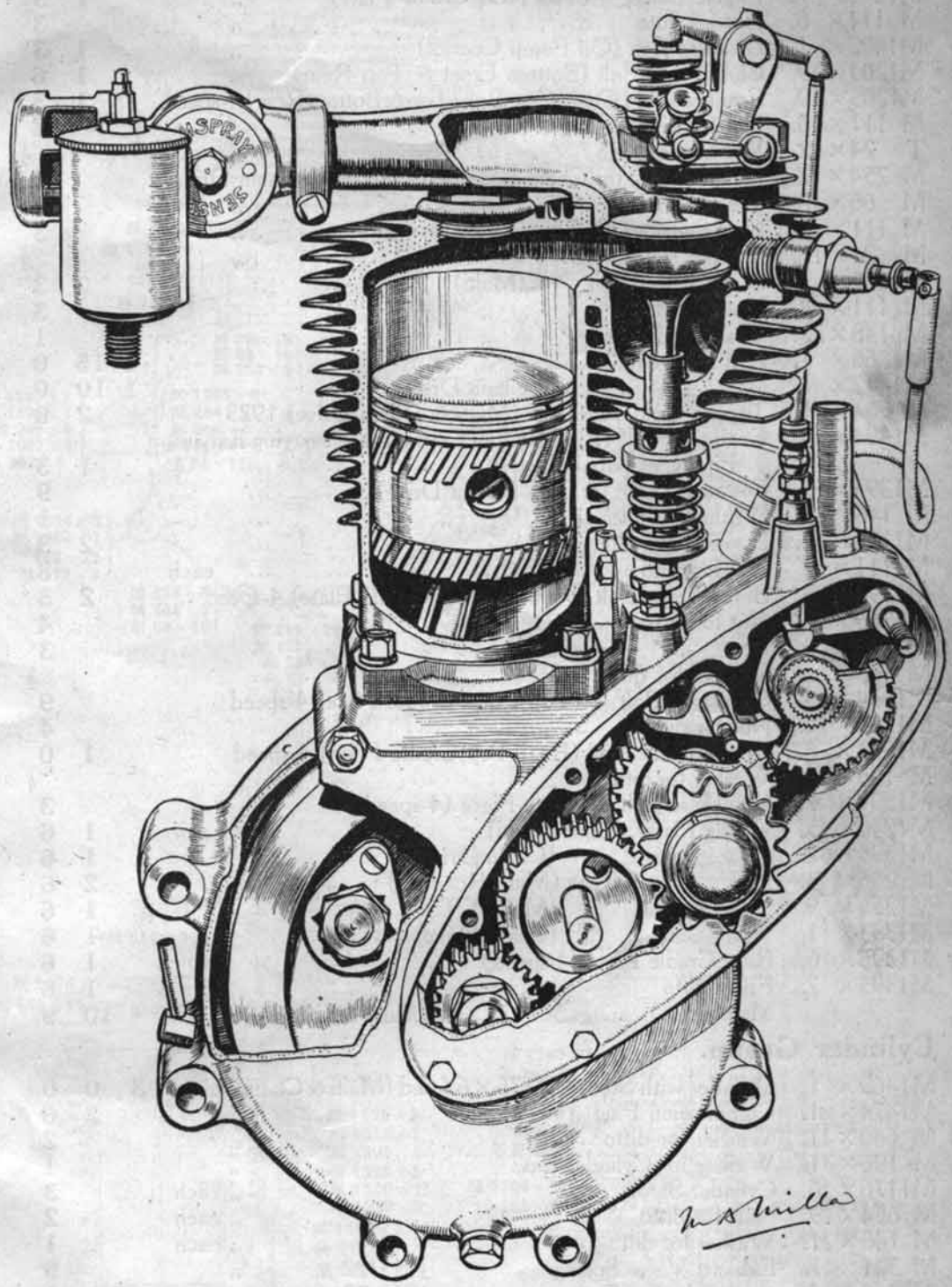
Connecting Rod Group.

			£	s.	d.
M 507 × 3.	Large End Rollers (Multi & Chain Drive)	per set of 18	2	3	
M 507 × 4.	" " Washers	" " ... each			1
M 507 × 7.	Small " Rollers	" " per set of 16	2	0	
M 507 × 10.	" " Washers	" " ... each			3
M1023 × 1.	Connecting Rod	" "	10	0	

Crank Case Group.

T 27 × 4.5.	Air Release (Multi & Chain Drive)	1	0	
M 65 × 11.	Tappet Guide, Inlet	" "	1	9	
M 65 × 11.	" " Exhaust	" " 1911-1922	1	9	
M 66 × 15.	"D"Headed Crank Case Bolt (top front)	(Multi & Chain Drive)			9
M 254 × 2.	Nut for ditto (Chain Drive)			2
M 66 × 10.	Washer for ditto	" "			1
M 98 × 8.	Oil Retaining Washer (Multi & Chain Drive)			1
M 254 × 8.	Bolt $\frac{5}{16}$ " (Bottom Rear)	" "			9
	Ditto (Top Rear) (Multi)			
M 254 × 2.	Nut for ditto (Multi & Chain Drive)			2
M 66 × 10.	Washer for ditto	" "			1
M 318 × 2.	Bush for Intermediate Gear Wheel (Multi & Chain Drive)	1	6	
M 351 × 2.	Engine Bolt $\frac{3}{8}$ " (Rear Bottom Cradle Plate carrying Exhaust Pipe Clip) (Multi)	1	3	
M3300 × 6.	Distance Piece for ditto (long) (Multi)			2
M3300 × 7.	" " " (short) " (Multi)			2
M 111 × 8.	Nut for ditto (Multi & Chain Drive)			3
M 547 × 2.	Timing Cover Screws	" " ... each			3
M 573 × 10.	Thrust Cap	1	6	
M1070 × 3.	Bolt with Extension for Attachment Plate (Bottom Front) (Multi)	1	9	
M 254 × 2.	Nut for ditto (Multi)			2
M 464 × 6.	Washer for ditto	" "			1
M1070 × 4.	Engine Bolt, $\frac{3}{8}$ ", with Extension for Attachment Plate (Top Rear) (Multi)	1	9	
M 153 × 7.	Castellated Nut for ditto	" "			3
M 148 × 22.	Washer for ditto	" "			1
M 254 × 2.	Plain Nut for ditto	" "			2
M 464 × 6.	Washer for ditto	" "			1
M1070 × 5.	Distance Stud	1	3	
M 254 × 2.	Nut for ditto			2
M 464 × 6.	Washer for ditto			1
M1102 × 1.	Right Half Crank Case (Multi & Chain Drive)	2	10	0
M1097 × 9.	Oil Pipe with Union M1190 × 2. (Multi & Chain Drive)	1	0	
M1105 × 2.	Timing Cover with Bush M318 × 2, Bearing M155 × 4, Collar M155 × 5 and Thrust Cap M573 × 10 (Multi)	18	6	
	Ditto with Bush M318 × 2 and Thrust Cap M573 × 10 (Chain Drive & T.T. Multi)	16	0	
M 196 × 2.	Paper Washer for Timing Cover (Multi & Chain Drive)			1
M1106 × 8.	Bush for Cam Wheel	5	0	
M 303 × 7.	Rivets for ditto each			$\frac{1}{2}$
M1176 × 3.	Drain Plug			4
M1176 × 6.	Studs for Cylinder each			3
M1176 × 7.	Foot Oiler Lever Bolt (Front Bottom Cradle Plate) (Multi)	2	3	
M1087 × 5.	Nut for ditto (Crank Case End)			6
M 111 × 8.	Castellated Nut for ditto (Lever End)			3
M 148 × 22.	Washer for ditto			1

499 c.c. ENGINE.



By courtesy of **MOTORCYCLE**

499 c.c. ENGINE.

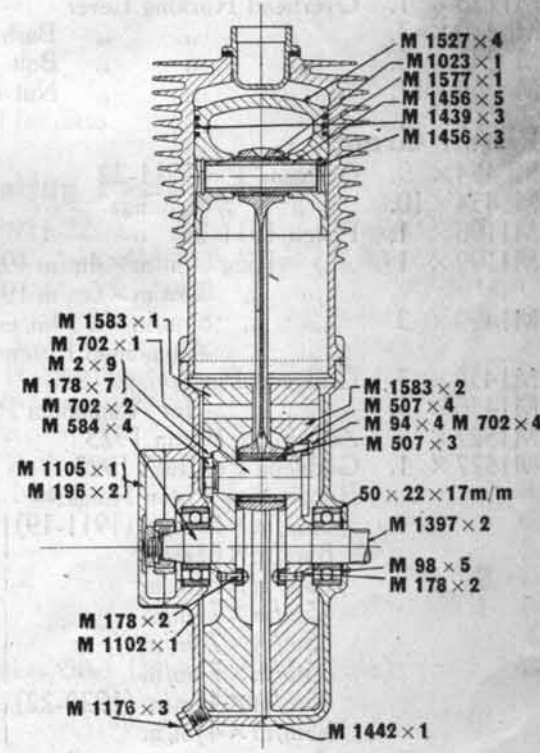
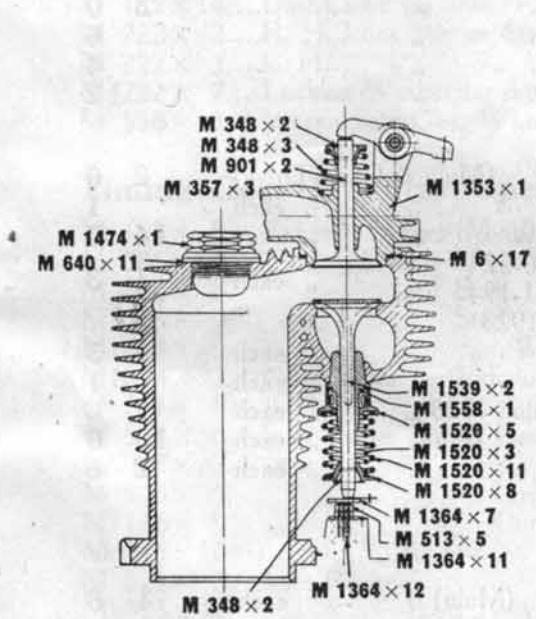
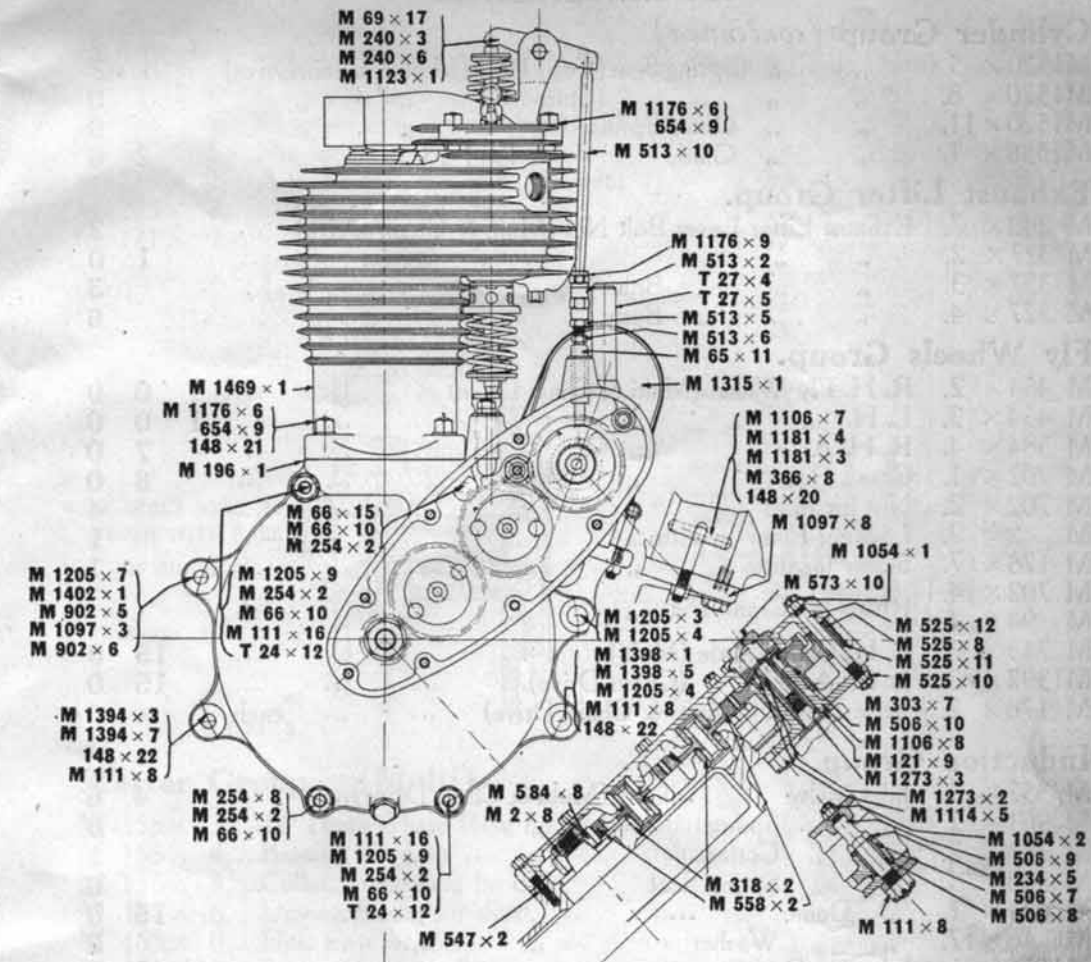
Crank Case Group (continued)

	£	s.	d.
M1205 × 3. Engine Bolt $\frac{1}{2}$ " (Top Front Cradle Plate) (Chain Drive)	1	6	
M1205 × 4. Nut for ditto "		4	
M1205 × 7. Engine Bolt $\frac{3}{8}$ " (Top Rear Cradle Plate) ..	1	3	
M 111 × 8. Nut for ditto "		3	
M1402 × 1. Distance Bolt (Oil Pump Control) "	1	3	
M1205 × 9. Chain Case Bolt (Bottom Front & Top Rear) ..	1	6	
M1205 × 10. Crankcase and Chain Case Bolt (Top & Bottom Rear) 4-speed	1	3	
M 111 × 16. Nut for ditto "		2	
T 24 × 12. Washer for ditto "		2	$\frac{1}{2}$
M 254 × 2. Nut, Central, for Chain Case Bolt ... (Chain Drive)		1	
M 66 × 10. Washer for ditto "		3	
M 111 × 6. Nut, Outside, for ditto "		3	$\frac{1}{2}$
M 24 × 12. Washer for ditto "		3	$\frac{1}{2}$
M1232 × 1. Brake Lever Bolt (Multi) "	2	3	
M 111 × 8. Nut for ditto " "		3	
M 148 × 22. Washer for ditto " "		1	
M1268 × 1. Left Half Crank Case " "	1	15	0
M1442 × 1. " " " " (Chain Drive) "	1	10	0
M1364 × 11. Tappet Guide, Exhaust (Multi & Chain Drive) 1923 ..	2	0	
M1394 × 3. Engine Bolt $\frac{3}{8}$ " (Rear Bottom Cradle Plate carrying Exhaust Pipe Clip (Chain Drive) "	1	3	
M1394 × 7. Distance Piece for ditto (Chain Drive) "		9	
M 148 × 22. Washer for ditto " "		1	
M1398 × 2. Brake Lever Bolt " "	2	3	
M 111 × 8. Nut for ditto each		3	
M1398 × 5. Brake Lever Bolt (Front Bottom Cradle Plate) 4-speed ...	2	3	
M1205 × 4. Nut for ditto "		4	
M 111 × 8. " " (Castellated) "		3	
M 148 × 22. Washer for ditto "		9	$\frac{1}{2}$
M1574 × 5. Crankcase Bolt $\frac{1}{2}$ " (Top Front Cradle Plate) 4-speed ..		4	
M1205 × 4. Nut for ditto "		4	
M1574 × 6. Crankcase Bolt $\frac{3}{8}$ " (Rear Top Cradle Plate) 4-speed ...	1	0	
M 148 × 22. Washer for ditto "		3	$\frac{1}{2}$
M1394 × 7. Crankcase Bolt Distance Piece (4-speed) "		3	
M1240 × 5. Cradle Plates, Front (Multi) per pair	1	6	
M1395 × 2. " " " (Chain Drive) "	1	6	
M1256 × 3. " " Rear (Multi Roadster) "	2	6	
M1256 × 9. " " " (Multi T.T.) "	1	6	
M1395 × 1. " " " (Chain Drive) "	1	6	
M1395 × 6. Rear Cradle Plate (4-speed) "	1	6	
M1395 × 7. Front ditto " "	1	6	
Main Axle Bearings 50 × 22 × 17 (Multi & C Drive) each	10	9	

Cylinder Group.

M1469 × 1. Cylinder with Studs M1176 × 6 fitted (Multi & Chain Drive)	3	0	0
M1474 × 1. Compression Plug "		2	6
M 640 × 11. Washer for ditto "		2	
M 196 × 1. Washer for Cylinder Base "		1	
M1176 × 6. Cylinder Studs " each		3	
M 654 × 9. Nuts for ditto " each		2	
M 148 × 21. Washer for ditto " each		1	
M 341 × 7. Exhaust Valve Spring 1911-22 ..		9	
M 348 × 2. " " Cotter 1912-23 ..		1	
M 348 × 3. " " Spring Seat " ..		6	
M1206 × 1. " " (1911-22) " ..	5	0	
M1539 × 2. " " (Celerity) 1923 " ..	8	6	
M1520 × 3. " " Inner Spring " ..		6	

499 c.c. ENGINE.



499 c.c. ENGINE.

Cylinder Group (continued).

			£	s.	d.
M1520 × 5.	"	"	1	2	
M1520 × 8.	"	"	1	0	
M1520 × 11.	"	"			9
M1558 × 1.	"	"	2	6	

Exhaust Lifter Group.

M 240 × 7.	Exhaust Lifter Lever Bolt Nut (Multi & Chain Drive)	...			2
M 327 × 2.	" " " " " "	...	1	0	
M 327 × 3.	" " " Bolt	...			3
M 327 × 4.	" " " Bush	...			6

Fly Wheels Group.

M 454 × 2.	R. H. Fly Wheel (Multi & Chain Drive)	...	1	0	0
M 454 × 3.	L. H. " " " "	...	1	0	0
M 584 × 4.	R. H. Axle	...		7	0
M 702 × 1.	Crank Pin	...		8	0
M 702 × 2.	Nut for ditto	...			4
M 2 × 9.	Locking Plate for ditto	...			1
M 178 × 7.	Screw for ditto	...			1
M 702 × 4.	Rivets for Crank Pin	" " " "	each		½
M 94 × 4.					
M 713 × 2.	L. H. Clutch Axle (Multi)	...	15	0	
M1397 × 2.	L. H. Axle (Chain Drive)...	...	15	0	
M 178 × 2.	Axle Rivets (Multi & Chain Drive)	...			½

Induction Group.

M 357 × 3.	Inlet Valve	...	4	6	
M 901 × 2.	" " Spring	...			6
M 348 × 2.	" " Cotter	...			1
M 348 × 3.	" " Spring Seat	...			6
M 634 × 1.	" Dome	...	15	0	
M 6 × 17.	" " Washer	...			2
M1116 × 1.	Injection Cock	...	1	6	
M1123 × 1.	Overhead Rocking Lever	...	3	0	
M 240 × 3.	" " " Bush	...			6
M 240 × 6.	" " " Bolt	...			4
M 69 × 17.	" " " Nut	...			2

Piston Group.

M 454 × 9.	Gudgeon Pin 1911-22	...	2	0	
M 454 × 10.	" " Springs	...			1
M1198 × 1.	Piston 1911-22	...	14	0	
M1199 × 1	" Ring 85m/m × 4m/m 1920-22	...	1	3	
M1439 × 3.	" " 85m/m × 6m/m 1911-19	...			
	" " 85m/m × 2.54m/m 1923	...			
	Aluminium Piston	...	1	3	
M1456 × 3.	Gudgeon Pin Springs 1923	...			1
M1456 × 5.	" " for Aluminium Piston 1923	...			6
M1527 × 4.	Aluminium Piston 1923	...	19	0	
M1577 × 1.	Gudgeon Pin Bush 1923	...	2	6	

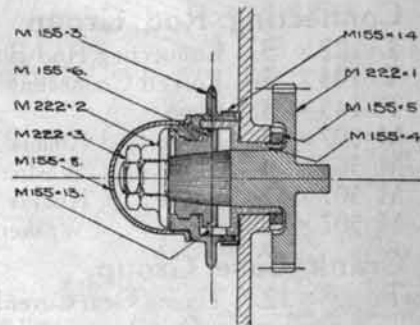
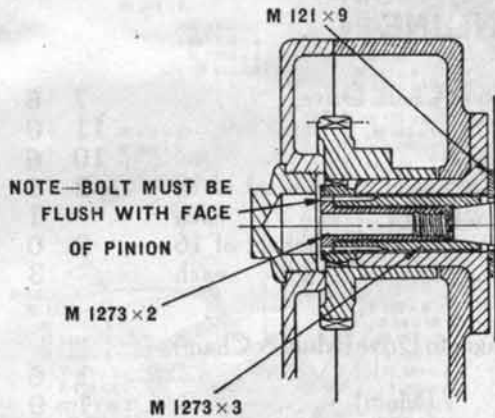
Repair Size Piston Rings :-

85m/m × 6¼m/m (1911-19)	(Multi)	...	each	1	6
85m/m × 6½m/m					
85m/m × 6¾m/m					
85m/m × 7 m/m					
85m/m × 7¼m/m					
85m/m × 7½m/m					
85m/m × 4¼m/m (1920-22)	(Multi & Chain Drive) ea.			1	6
85m/m × 4½m/m					

499 c.c. ENGINE.

Magneto Group.

		£	s.	d.
M-L	Magneto Complete (Multi & Chain Drive)			Maker's price current
M1097 × 8.	Locating Pin			3
M1181 × 4.	Magneto Strap and Bolt M1181 × 3	1	6	
M 366 × 8.	Nut for ditto			2
M1273 × 2.	Adapter Bolt for M-L Magneto	2	0	
M1273 × 3.	" for M-L Magneto	1	9	
M 121 × 9.	" Washer			1
	$\frac{3}{8}$ " Spring Washer			1
	M-L High Tension Wire and Terminal	5	3	



Starter Group. (Multi)

M 155 × 3.	14 Tooth Chain Ring for Engine Starter	6	0
M 155 × 4.	Bearing for ditto	2	9
M 155 × 5.	Collar for Bearing for ditto		6
M 155 × 6.	Driving Sleeve for ditto	3	0
M 155 × 8.	Dust Cap for ditto	1	0
M 155 × 13.	Spring Drag for ditto		1
M 155 × 14.	Dust Cover for ditto		3
M 222 × 2.	R. H. Lock Nut for ditto		9
M 222 × 3.	L. H. " " " " " " " " " " " "		3
M 222 × 7.	Locking Washer for ditto		1
M 558 × 3	Intermediate Gear Wheel for ditto	11	6

Timing Gear & Valve Operating Parts Group.

M 108 × 8.	Exhaust Tappet (Multi) 1911-22	2	0
M 506 × 7.	" " " " " " " " " " " " (Multi & Chain Drive)	2	6
M 506 × 8.	" " " Bush	1	0
M 506 × 9.	" " " Stud	1	6
M 234 × 5.	" " " " Washer		1
M1054 × 2.	Outside Nut for Exhaust Rocker Stud		3
M 111 × 8	Inside " " " " " " " " " " " "		3
M 513 × 6.	Inlet Valve Tappet Rod	1	6
M 513 × 2.	" " " " " Adjuster		6
M 513 × 5.	" " " " " Lock Nut		3
M1176 × 9.	" " " " " Cup		4
M 513 × 10	" " " " " Rod		9
M 525 × 8.	Inlet Rocker	2	6
M 525 × 11.	" " " Bush	1	0
M 525 × 12.	" " " Stud		4
M1054 × 1.	Outside Nut for Inlet Rocker Stud (Multi & Chain Drive)		3
M 525 × 10.	Inside " " " " " " " " " " " "		3
M 558 × 2.	Intermediate Wheel " " " " " " " " " " " "	8	6

499 c.c. ENGINE.

Timing Gear and Valve Operating Parts Group (continued).

		£	s.	d.
M 558 × 3.	Intermediate Wheel for Engine Starter (Multi) ...	11	6	
M 584 × 8.	Driving Pinion for R. H. Axle ... (Multi & Chain Drive)	3	0	
M 2 × 8.	" " Nut " " " " " "			4
M1114 × 5.	" " for Cam Wheel ... " "	1	6	
M1364 × 7.	Adjustable Exhaust Tappet 1923... " "	1	0	
M1364 × 12.	" " " Body " "	1	9	
M 513 × 5.	" " " Lock Nut " "			3
M1459 × 1.	Cam Wheel ... " "	14	6	

998 c.c. ENGINE.

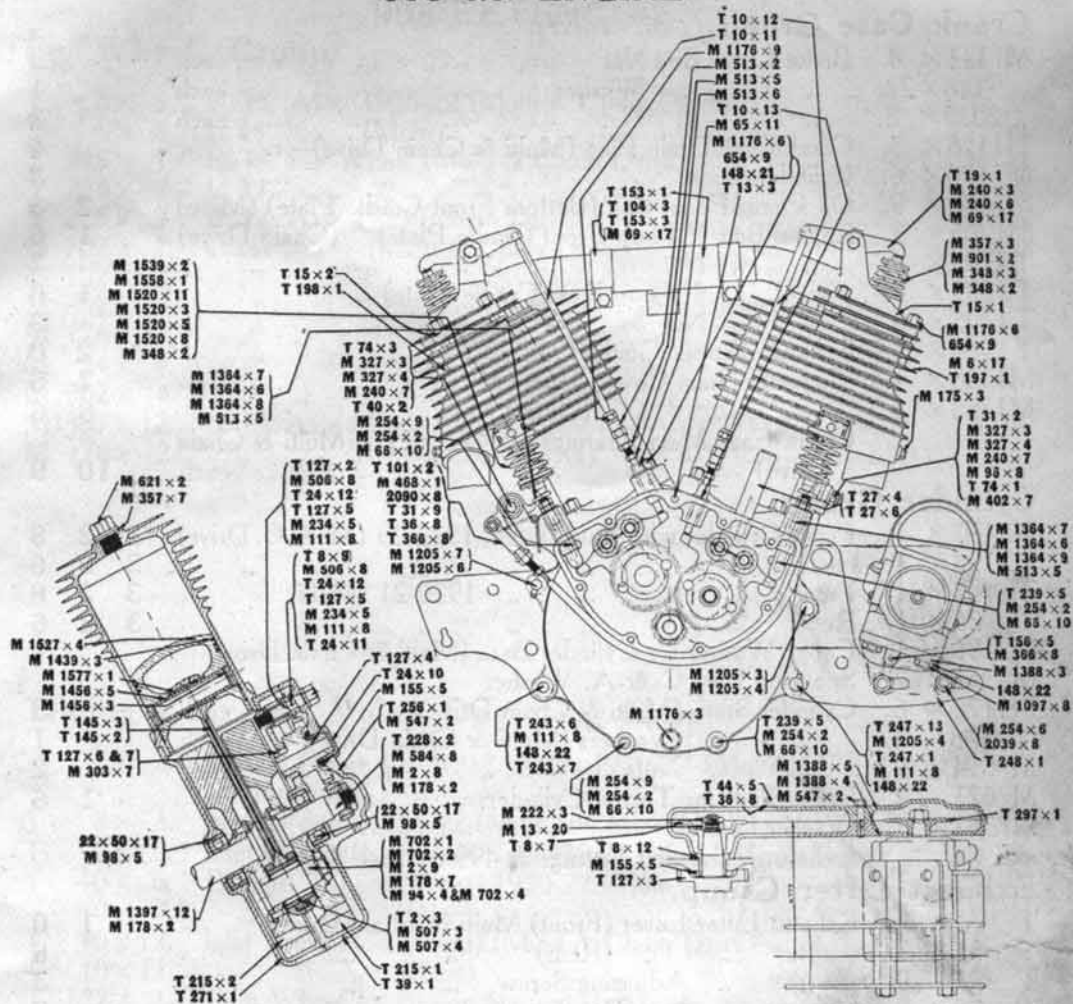
Connecting Rod Group.

T 2 × 3.	Connecting Rod Bush (Multi & Chain Drive) ...	7	6	
T 145 × 2.	Forked Connecting Rod " " ...	11	0	
T 145 × 3.	Plain " " " " ...	10	6	
M 507 × 3.	Large End Rollers " " per set of 18	2	3	
M 507 × 4.	" " Washers " " ... each			1
M 507 × 7.	Small " Rollers " " per set of 16	2	0	
M 507 × 10.	" " Washers " " ... each			3

Crank Case Group.

T 8 × 12.	Timing Gear Cover Bush for Magneto Drive (Multi & Chain Drive) ...	1	6	
T 10 × 5.	Exhaust Tappet Guide, Front (Multi) ...	1	9	
T 10 × 13.	Inlet " " (Multi & Chain Drive)	1	9	
T 13 × 3.	Timing Cover Bolt " " " "			2
M 36 × 8.	Nut for ditto " " " "			2
T 13 × 4.	Top Distance Stud for Attachment Plate (Multi)...	1	6	
M 254 × 2.	Nut for ditto " " " "			2
T 13 × 8.	Crank Case Bolt $\frac{5}{16}$ " (Bottom Rear) (Multi & Chain Drive)	1	0	
M1097 × 5.	Nut for ditto " " " "			2
M 66 × 10.	Washer for ditto " " " "			1
T 24 × 10.	Bush for Cam Wheel (Chain Drive) ...	2	6	
T 27 × 4-5.	Crank Case Air Release (Multi & Chain Drive) ...	1	0	
T 38 × 1.	" " L.H. (Multi)...	2	2	6
T 39 × 1.	" " R.H. (Multi & Chain Drive) ...	2	5	0
T 44 × 5.	Timing Cover and Chain Case Screw (Multi & Chain Drive)			2
M 36 × 8.	Nut for ditto " " " "			2
M 65 × 11.	Inlet Tappet Guide (Rear) " " " "	1	9	
M 65 × 11.	Exhaust " " (Multi) ...	1	9	
M 98 × 8.	Oil Retaining Washer (Multi & Chain Drive) ... each			1
T 127 × 6-7.	Cam Wheel Bearings " " ... each	15	6	
M 303 × 7.	" " Rivets " " ... each			$\frac{1}{2}$
T 134 × 1.	Magneto Chain Cover (Inner) Splitdorf (Multi) ...	7	6	
T 44 × 2.	" " (Outer) " " ...	8	6	
M 155 × 4.	Bearing for Engine Starter (Multi) ...	3	0	
M 155 × 5.	" " Collar (Multi & Chain Drive)			6
T 239 × 5.	Crank Case Bolt $\frac{5}{16}$ " Top and Bottom Front (Chain Drive) ea.	1	6	
T 24 × 12.	" " Washers... " " each			1
M 111 × 6.	" " Nuts " " each			3
T 239 × 7.	Crank and Chain Case Bolt (Bottom Rear) 4-speed ...	1	3	
M 111 × 16.	Nut for ditto " " " "			2
T 24 × 12.	Washer for ditto " " " "			$\frac{1}{2}$
M1574 × 5.	Crank Case Bolt $\frac{1}{2}$ " (Bottom Front Cradle Plate) 4-speed			9
M1205 × 4.	Nut for ditto " " " "			4
M1574 × 6.	Crank Case Bolt $\frac{3}{8}$ " (Rear Bottom Cradle Plate supporting Silencer) 4-speed ...	1	0	
T 239 × 6.	Chain Cover Attachment Stud (4-speed) ...			2

998 c.c. ENGINE.



		£	s.	d.
T 243 × 6.	Engine Bolt $\frac{3}{8}$ " Bottom Rear	6
T 243 × 7.	" " Distance Piece	9
T 24 × 12.	" " Washer	1
M 111 × 8.	" " Nut	3
T 245 × 1.	Timing Gear Cover (Multi & Chain Drive)	12
	" " Paper Washer	2
T 247 × 13.	B.ake Lever Bolt, Bottom Front Cradle Plate (Chain Drive)	2	3	
148 × 22.	" " Washer	1
M1205 × 4.	" " Nut	4
M 111 × 8.	" " (Castellated)	3
T 248 × 1.	Cradle Plates (Front) (Chain Drive)per pair	1
T 248 × 2.	" (Rear)	1
T 254 × 9.	Crank Case Bolts $\frac{5}{16}$ " Front and Top Rear (Multi)	each	...	9
T 254 × 2.	" " Nut for ditto	each	...	2
M 66 × 10.	" " Washer for ditto	each	...	1
T 271 × 1.	" " L. H. (Chain Drive)	1	17	6
M 464 × 4.	Washers for Bolts holding Multi Attachment Plate	each	...	1
M 547 × 2.	Timing Cover Screws (Multi & Chain Drive)	3
M1070 × 3.	Crank Case Bolt with Extension for Attachment Plate (Bottom Front) (Multi)	1
M1097 × 4.	Engine Bolt (Bottom Rear Cradle Plate) (Multi)	1
148 × 22.	" " Washer	1
M 111 × 8.	" " Nut	3
M1097 × 9.	Crank Case Oil Pipe and Union (Multi & Chain Drive)	1
M1190 × 2.		0
M1176 × 1.	Brake Lever Bolt (Top Front Cradle Plate) (Multi)	2

998 c.c. ENGINE.

Crank Case Group (continued).

			£	s.	d.
M 111	× 8.	Brake Lever Bolt Nut			3
	148	× 22. " " " Washer			1
	2039	× 8. " " " Nut			3
M1176	× 3.	Crank Case Drain Plug (Multi & Chain Drive)			4
M1176	× 6.	Cylinder Studs " " "			3
M1176	× 9.	Oil Pump Pedal Bolt (Bottom Front Cradle Plate) (Multi)	2		3
M1205	× 3.	Engine Bolt ½" (Top Front Cradle Plate) (Chain Drive)	1		6
T 1205	× 4.	" " Nut			4
T 1205	× 7.	" " ¾" (Top Rear Cradle Plate)	1		3
T 1205	× 6.	" " Nut			3
T 1364	× 6.	Exhaust Tappet Guide 1922-23	2		0
M1388	× 4.	Magneto Chain Cover (Inner) M.L.	7		6
M1388	× 5.	" " " (Outer) M.L.	8		6
		Crank Case Main Bearings 50 × 22 × 17 (Multi & Chain Drive)	10		9

Cylinder Group.

T 197	× 1.	Front Cylinder with Studs fitted, 1922-23 (M. & C. Drive)	3	2	6
T 198	× 1.	Rear " " " " " " " " " " " "	3	2	6
T 43	× 1.	Front " " " " " 1920-21 (Multi)	3	2	6
T 25	× 1.	Rear " " " " " " " " " " " "	3	2	6
M 196	× 1.	Paper Washer for Cylinder Base (Multi & Chain Drive)			1
M 357	× 7.	Sparking Plug C & A. Washer			½
M1176	× 6.	Cylinder Studs (Multi & Chain Drive) each			3
	148	× 21. " " Washers (Multi & Chain Drive) each			1
M 654	× 9.	" " Nuts " " " " " " " " " " " "			2
M 621	× 2.	Brass Plugs for Top of Cylinders	1		6
M 357	× 7.	Washer for ditto			½

Exhaust Valve and Fittings as 499 c.c., see page 4.

Exhaust Lifter Group.

T 31	× 2.	Exhaust Lifter Lever (Front) Multi & Chain Drive)	1		0
T 31	× 7.	" " " (Rear) " " " " " " " " " " " "			6
T 31	× 9.	" " Adjusting Screw " " " " " " " " " " " "			3
T 36	× 8.	" " Nut (Rear) " " " " " " " " " " " "			2
T 40	× 2.	" " Spring " " " " " " " " " " " "			2
T 74	× 1.	" " Anchor Plate " " " " " " " " " " " "			3
T 101	× 2.	" " Stirrup and Rivet " " " " " " " " " " " "			2
M 96	× 8.	" " Nipples " " " " " " " " " " " "			1
M 240	× 7.	" " Bolt Nut (Front) " " " " " " " " " " " "			2
M 327	× 3.	" " Bolts (Front & Rear), " " " " " " " " " " " "			3
M 327	× 4.	" " Bushes " " " " " " " " " " " "			6
T 366	× 8.	" " Nut for Adj. Screw " " " " " " " " " " " "			3
M 402	× 7.	" " Screw " " " " " " " " " " " "			2
		" " Cable only " " " " " " " " " " " "			3
		" " Cover for Cable " " " " " " " " " " " "			9

Induction Group.

T 15	× 1.	Inlet Dome (Front) (Multi & Chain Drive)	17		6
T 15	× 2.	" " (Rear) " " " " " " " " " "	17		6
M 6	× 17.	" " Washer " " " " " " " " " "			2
T 19	× 1.	Overhead Rocker " " " " " " " " " "	3		3
M 240	× 3.	" " Bush " " " " " " " " " "			6
M 240	× 6.	" " Bolt " " " " " " " " " "			4
M 69	× 17.	" " Nut " " " " " " " " " "			2
T 153	× 1.	Induction Pipe " " " " " " " " " "	16		6
T 104	× 3.	" " Clips " " " " " " " " " "	3		9
T 153	× 3.	" " Screws " " " " " " " " " "			3
M 69	× 17.	" " Nuts " " " " " " " " " "			2
M1116	× 1.	Injection Cock " " " " " " " " " "			0
		Senspray Carburettor Complete			2
		Inlet Valves and Fittings as 499 c.c., see page 6.			0

Maker's price current

750 c.c. ENGINE (Long Stroke).

Cylinder Group.

			£	s.	d.
C 120× 1.	Cylinder with Studs fitted (Multi)...	...	3	5	0
C 126× 2.	" Braces	" ...			4
C 126× 3.	Packing Pieces	" ...			2
C 126× 4.	Clips for Cylinder Braces	" ...			9
C 126× 5.	Bolts for ditto	" ...			9
C 126× 6.	Compression Plug	" ...		4	6
M 66× 7.	Washer for Cylinder Brace	" ...			1
M 66× 8.	Nut	" ...			3
2039× 8.	Nuts for Brace Clip Bolts	" ...			3

Fly Wheels Group.

C 58× 1.	R. H. Fly Wheel (Multi)	...	1	1	0
C 58× 2.	L. H. " " "	...	1	1	0

Induction Group.

C 112× 2.	Inlet Valve (Long) 1914-19 (Multi)	...		5	0
C 112× 3.	" " Guide " "	...		3	0

Piston Group.

C 131× 2.	Piston Multi)	...		15	0
-----------	---------------	-----	--	----	---

Timing Gear & Valve Operating Parts Group.

T 10× 11.	Inlet Valve Rod, 7½" long, to suit small Inlet Dome (Multi)	...		1	0
C 90× 4.	" " " 9" " " large " "	...		1	3
C 132× 2.	Adjustable Exhaust Tappet Rod (Multi)...	...		2	6
C 132× 3.	" " " " " " " "	...		1	9
M 513× 5.	Lock Nut for ditto " "	...			3

NOTE.—All other Long Stroke Engine parts are interchangeable with 499 c.c. see pages 2—8.

Multi Gear and Clutch Group.

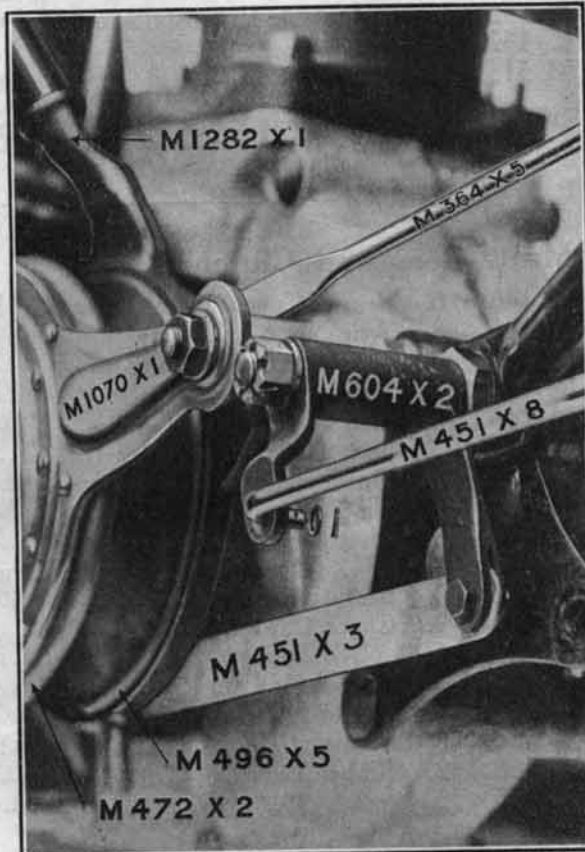
M 146× 6.	Bearing Cone with Retaining Ring M160× 9 and 15 ¼" Balls	...		2	0
M 146× 8.	Axle Nut			3
M 146× 9.	" Locking Washer	...			2
M 146× 15.	Outer Clutch Plates	...			2
M 146× 16.	Inner " "	...			2
M 164× 3.	Spring for Control Cable	...			2
M 419× 4.	Operating Lever Wire Stop	...		1	3
M 421× 6.	Nipples for ditto	...			3
M 441× 6.	Clutch Spring Box	...		1	6
M 442× 2.	" Operating Sleeve and Thrust Cup M472× 7	...		14	6
M 442× 6.	Bearing Carrier	...		3	6
M 442× 9.	Clutch Cap	...		1	6
M 447× 6.	" Spring	...		1	0
M 451× 3.	Ribbon for Cam Plate	...			9
M 466× 4.	Flange Sleeve	...		15	0
M 466× 6.	Retaining Ring for Sliding Pulley Flange	...		1	3
M 468× 2.	Ribbon Bush	...			2
M 468× 3.	" " Rivet	...			1

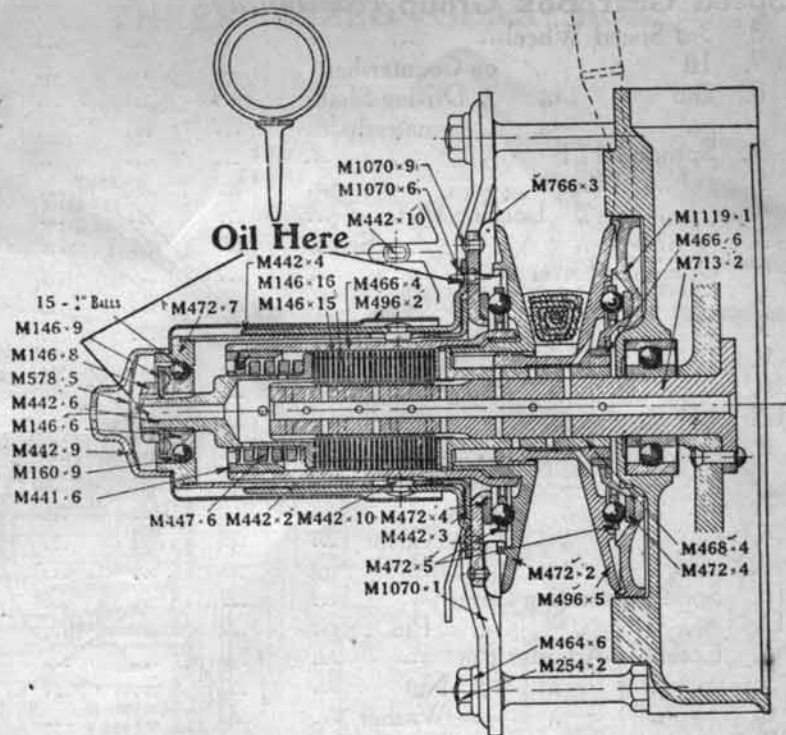
Multi Gear and Clutch Group (continued).

M 468 × 4.	Carrier for Sliding Pulley Flange	7	0
M 472 × 2.	Fixed Pulley Flange	14	6
M 472 × 4.	Thrust Race	2	6
*M 472 × 5.	Ball Cage	each	4	0
M 496 × 2.	Clutch Dust Cover	3	0
M 496 × 5.	Sliding Pulley Flange	16	6
M 578 × 5.	Gauze for Clutch Cap	2	2
M 766 × 3.	Dust Cover only	2	0
M 902 × 1.	Belt Guard only	2	0
M1070 × 1.	Attachment Plate with Operating Lever M442 × 3, Outer Shell M442 × 4, Dust Cover M766 × 3 & rivets, assembled	1	12 6
M1070 × 9.	1/2" Rivets for ditto	each	1	10 0 1/2
M1119 × 1.	Cam Plate with Lever and Ribbon M451 × 3	1	7 0
	Clutch Control complete with Cable and Casing	1	7 0
	Inner Cable with Clamp fitted	1	0
	Outer Casing for ditto	2	6

Multi Operating Parts.

M 396 × 11.	Fork Joint	1	3
M 121 × 6.	Pin for ditto	1	2
M 451 × 4.	Multi Operating Long Rod	1	0
M 148 × 22.	Washer for ditto	5	6
M 604 × 2.	Multi Operating Bracket	5	6
M 468 × 1.	" " " Screw	2	2
M 468 × 2.	" " " Bush	2	2
2090 × 8.	" " " Nut	2	2
M1115 × 3.	Operating Lever for Bell Crank	6	9
M1196 × 2.	Bell Crank Lever Screw	1	3
M1196 × 3.	" " "	1	3
M 433 × 7.	" " " Bolt	3	3
M 69 × 17.	" " " Nut	2	2





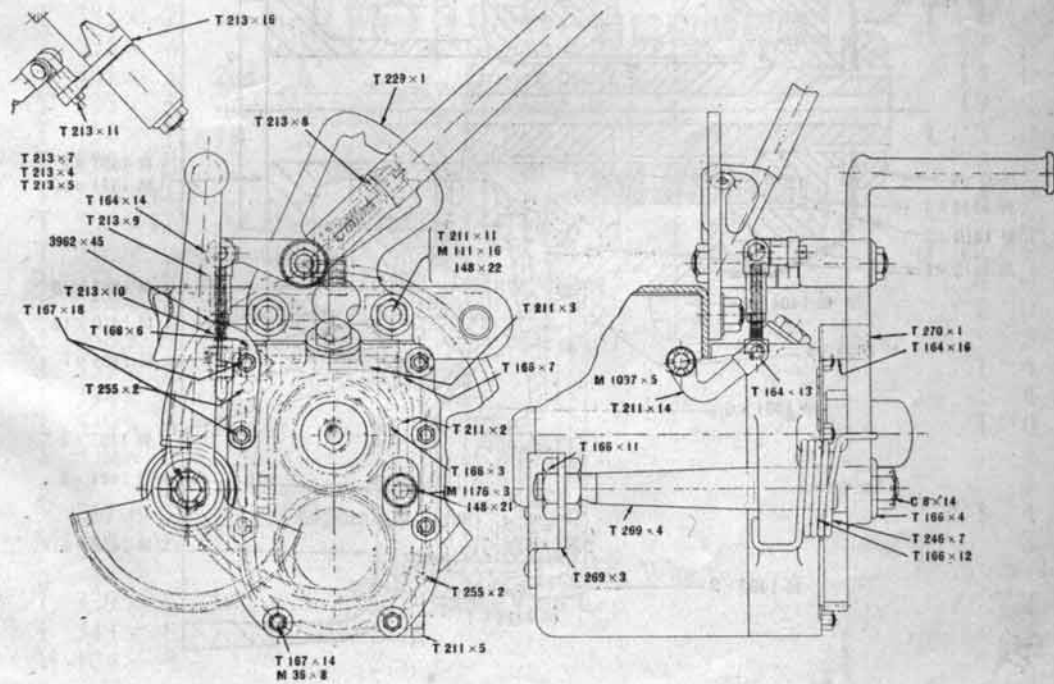
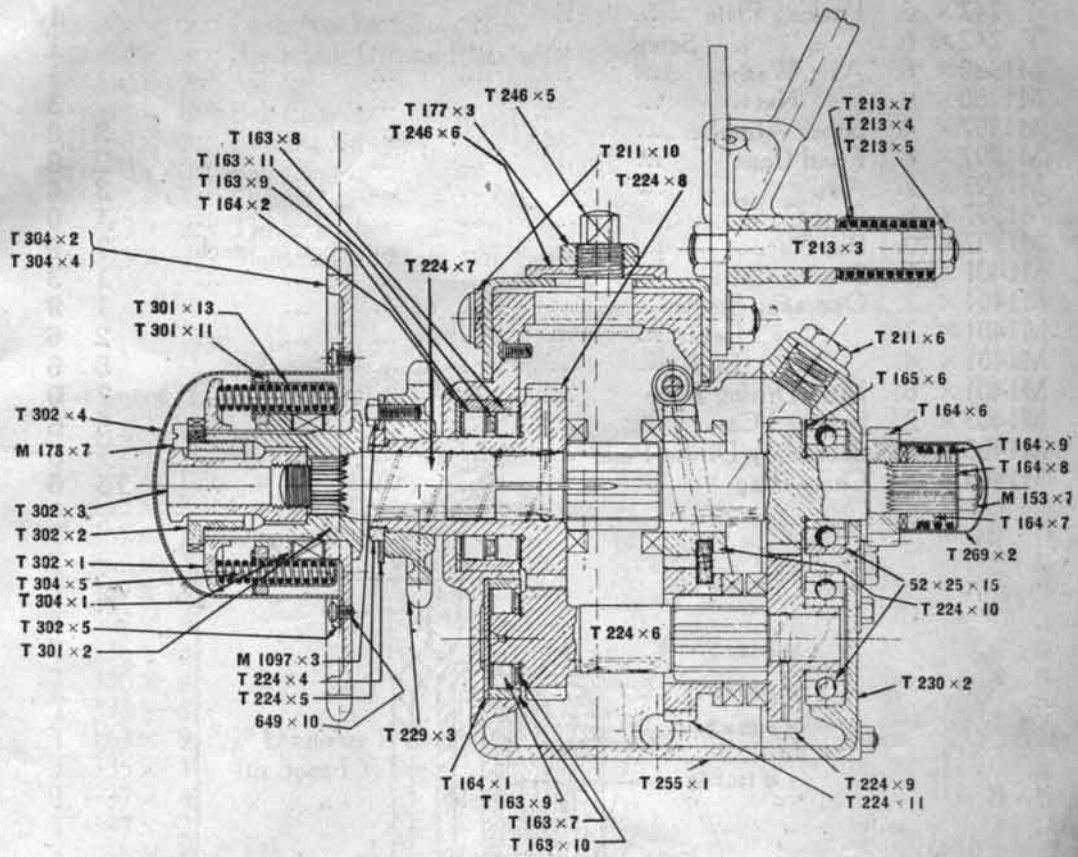
Three-Speed Gear Box Group.

				£	s.	d.
T 163 × 8.	Outer Ring for Driving Shaft roller Bearing	6	6	
T 163 × 9.	Roller	"	"	...	each	3
T 163 × 11.	Cage	"	"	3 9
T 164 × 2.	Washer	"	"	2 9
T 163 × 7.	Outer Ring for Countershaft	"	"	3 0
T 163 × 9.	Roller	"	"	...	each	3
T 163 × 10.	Cage	"	"	1 9
T 164 × 1.	Washer	"	"	2 6
T 164 × 6.	Kick Starter Pinion	10 0
T 164 × 7.	" " Driving Sleeve	4 6
T 164 × 8.	" " Spring Cover	6 6
T 164 × 9.	" " " "	3 3
T 269 × 2.	Outer Cover for Driving Shaft Nut	6 6
M 153 × 7.	" " Driving Sleeve Nut	3 3
T 165 × 6.	Oil Retaining Washer	3 3
T 211 × 2.	Striking Fork	5 6
T 166 × 3.	" " Plate	3 6
T 166 × 6.	" " Bush	1 6
T 211 × 3.	" " Pin	1 3
M1097 × 5.	" " " Nut	2 2
T 211 × 5.	Drain Plug	3 3
T 211 × 6.	Filler Cap	6 6
M1176 × 3.	Oil Level Plug	4 4
M 148 × 21.	Washer for ditto	1 1
T 211 × 14.	Striking Lever	4 6
T 164 × 13.	" " Pin	3 3
T 166 × 7.	" " Bush	1 9
T 213 × 9.	Connecting Fork	1 3
T 213 × 10.	" " Pin	4 4
3962 × 45.	" " " Lock Nut	1 1
T 164 × 14.	" " Connecting Pin	3 3
T 224 × 6.	Countershaft	1 7 6
T 224 × 7.	Driving Shaft	1 17 6

Three-Speed Gear Box Group (continued).

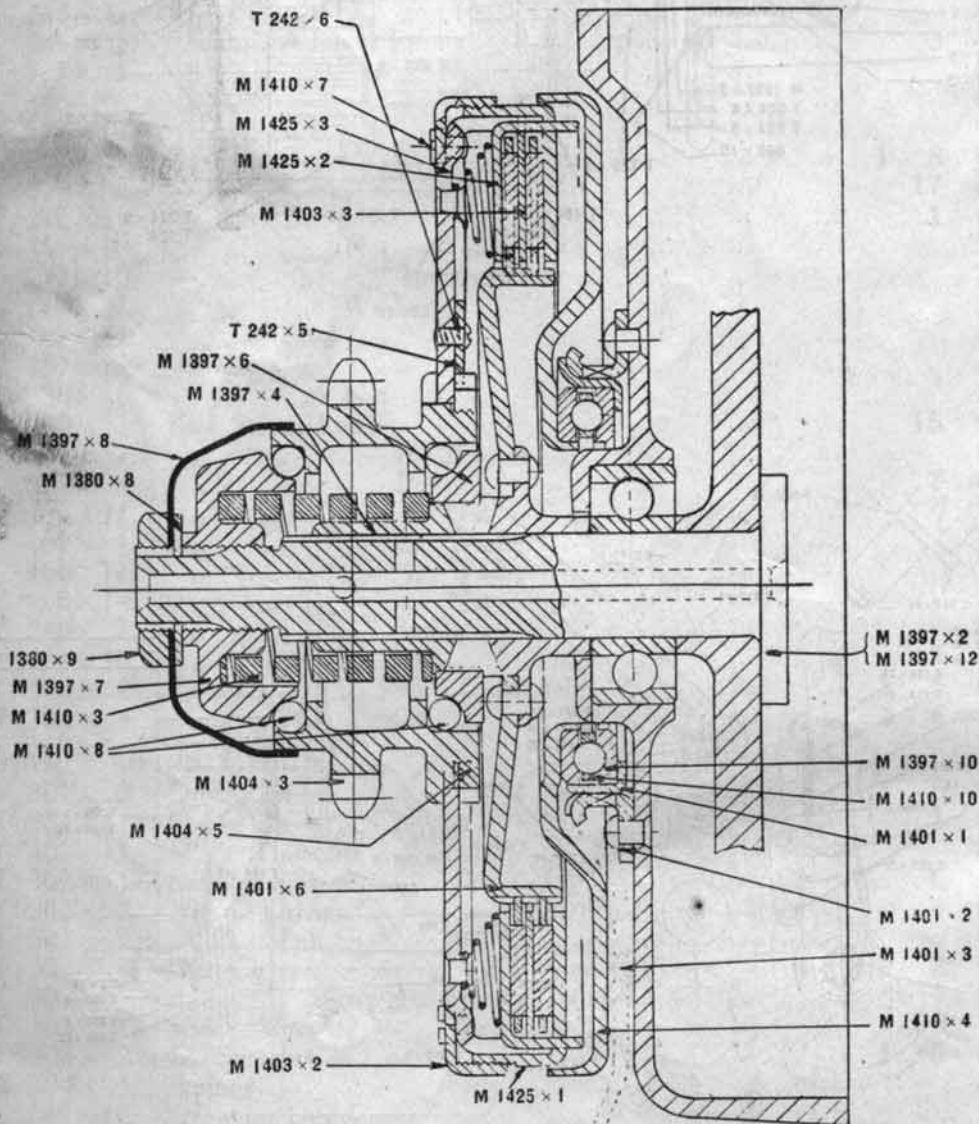
				£	s.	d.
T 224 × 8.	3rd Speed Wheel...	1	10	0
T 224 × 9.	1st " " on Countershaft		17	6
T 224 × 10.	2nd " " " Driving Shaft		17	6
T 224 × 11.	" " " " Countershaft		17	6
T 229 × 3.	Sprocket 17T		13	6
T 224 × 5.	" Nut			6
T 224 × 4.	" " Locking Plate			2
M 1097 × 3.	" " " " Screw			2
T 229 × 6.	Operating Lever		7	0
T 229 × 5.	" " Support	10	6	0
T 213 × 3.	" " Pin	1	0	0
T 211 × 9.	" " " Nut...			2
T 213 × 6.	" " Plunger...			3
T 213 × 12.	" " " Spring			2
T 213 × 8.	" " " Locating Pin			2
T 229 × 1.	" " Quadrant		3	0
T 213 × 7.	" " Spring			2
T 213 × 4.	" " " Cover			6
T 213 × 5.	" " " " Nut			6
T 213 × 16.	Spring Operating Lever		4	6
T 213 × 11.	" " " Pin			4
T 246 × 5.	Eccentric Adjuster Pin		3	4
T 177 × 3.	" " " Nut			8
T 246 × 6.	" " " Washer			6
649 × 10.	" " " Screw			6
T 253 × 1.	Gear Box	1	8	6
T 230 × 2.	" Cover		17	6
T 211 × 11.	" Bolt		1	6
M 111 × 16.	" " Nut			3
T 211 × 10.	" " " Locking Plate			2
148 × 22.	" " Washer			1
T 167 × 14.	" Stud			4
T 167 × 18.	" " "			4
M 36 × 8.	" " " Nut			2
T 270 × 1.	Kick Starter Lever		15	0
T 269 × 3.	" " " Pin Bracket			6
T 269 × 4.	" " " Pin		7	6
T 166 × 11.	" " " " Nut			3
166 × 4.	" " " " Washer			1
166 × 12.	" " " " Washer			1
C 8 × 14.	" " " " Nut			3
T 246 × 7.	" " " Spring			9
T 164 × 16.	" " " Stop		1	3
T 304 × 2.	Sprocket 26T for 998 C.C. Model	1	5	0
T 304 × 4.	" 34T " 500 " "	1	5	0
Spring Drive Group.						
T 301 × 2.	Driving Sleeve	1	5	0
T 301 × 11.	Spring Carrier		1	6
T 301 × 13.	" Thimbles	each		3
T 302 × 1.	Stop for Springs		6	0
T 302 × 2.	Nut for Driving Sleeve		4	0
T 302 × 3.	" " Main Shaft		3	0
T 302 × 4.	Dust Cover		2	6
T 302 × 5.	" " Strengthening Plate		1	0
T 304 × 1.	Shock Absorber		10	0
T 304 × 2 or 4.	Sprocket 26T or 34T	1.	5	0
T 304 × 5.	Springs	each		3
649 × 10.	Screw for Dust Cover	each		1
M 178 × 7.	Locking Screw for Main Shaft Nut			1

THREE SPEED GEAR BOX.



Clutch for Three-Speed Models, 1922.

T 242 × 5.	Locking Plate	1
T 242 × 6.	" " Screw	1
M1380 × 8.	Axle Washer	1
M1380 × 9.	" Nut	3
M1397 × 4.	Shock Absorber	3 0
M1397 × 6.	Fixed Cone	2 6
M1397 × 7.	Adj. "	3 6
M1397 × 8.	Dust Cover	1 0
M1397 × 10.	Ball Race...	each	...	7 6
M1401 × 1.	Bearing Carrier	1 3
M1401 × 2.	Operating Sleeve	1 9
M1401 × 3.	" Lever	2 6
M1401 × 4.	" Plate	5 6
M1401 × 6.	Main Driving Plate	7 0
M1403 × 2.	Screwed Cap	5 6
M1403 × 5.	Secondary Driven Plate	1 6
M1404 × 3.	Chain Ring	15 6



Clutch for Three-Speed Models, 1922 (continued)

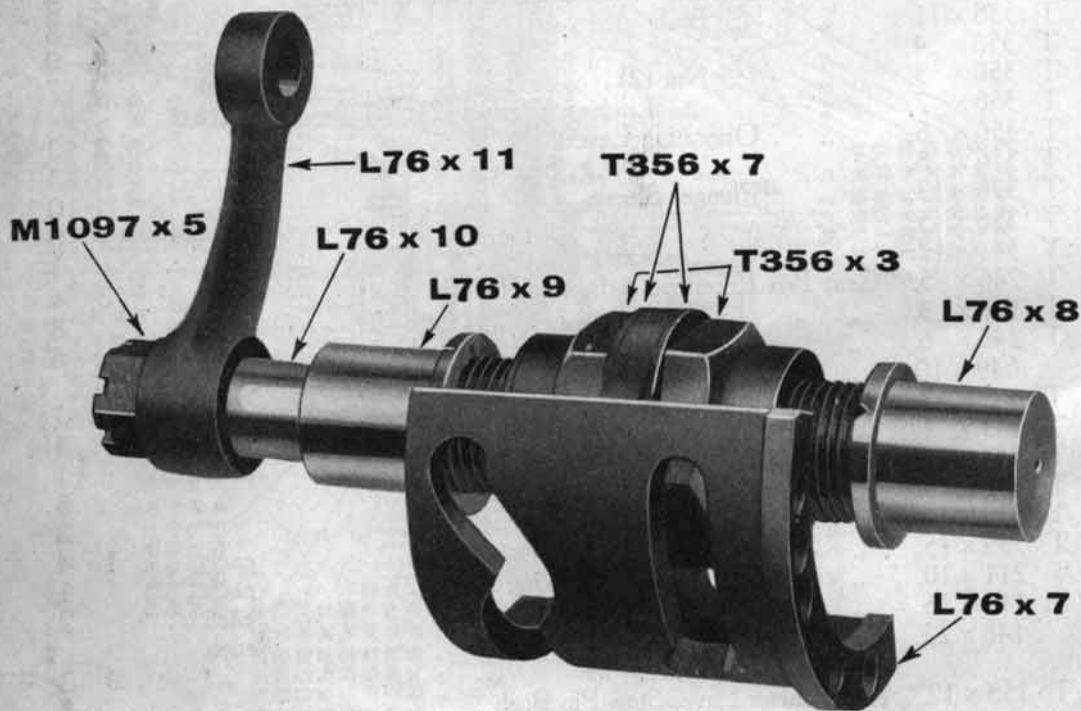
						£	s.	d.
M1404	×	5.	Lock Nut for Chain Ring	1	6	
M1404	×	6.	Secondary Driving Plate with Inserts	6	0	
M1410	×	3.	Spring		9	
M1410	×	8.	Ball Cage	1	3	
M1410	×	7.	Locking Screw		2	
M1410	×	10.	Ball Cage	3	0	
M1425	×	1.	Outer Cap	6	0	
M1425	×	2.	Thrust Plate	3	3	
M1425	×	3.	Main Driven Plate with Springs fitted	13	6	

4-speed Gear Box.

T 357	×	1.	Gear Box	1	9	6
T 355	×	1.	" " Cover	10	0	
T 355	×	2.	Cover for Operating Mechanism	3	3	
T 367	×	1.	Driving Shaft	1	19	0
T 367	×	2.	" " Washer		9	
T 367	×	3.	" " " "		9	
T 367	×	4.	" " Felt Washer		3	
T 336	×	3.	" " Roller Bearing Ring	6	9	
T 336	×	4.	" " " " Washer	4	3	
T 336	×	5.	" " " " Cage	6	6	
T 163	×	9.	$\frac{3}{8}$ " Diameter Rollers (30)	...	each		3	
T 335	×	1.	4th Speed Wheel	1	10	9
T 337	×	4.	" " " Sleeve	8	6	
T 337	×	2.	" " " " Nut	3	6	
T 336	×	6.	" " " Roller Bearing Cage (2)	...	each	5	0	
T 336	×	7.	" " " " Washer	4	0	
T 337	×	1.	Sprocket (18 Tooth)	14	0	
T 337	×	3.	" Roller Bearing Carrier	8	3	
T 339	×	9.	" " " " Bolt (6)	...	each		1	$\frac{1}{2}$
T 339	×	8.	" " " " Nut (6)	...	each		2	$\frac{1}{2}$
			" " " " Bolt Locking Wire		1	
T 335	×	2.	3rd Speed Wheel on Driving Shaft	1	1	0
T 335	×	4.	" " " " Countershaft	15	0	
T 335	×	3.	2nd " " " Driving Shaft	14	0	
T 335	×	5.	" " " " Countershaft	19	9	
T 354	×	1.	1st " " " "	1	3	0
T 336	×	8.	" " " Roller Bearing Carrier	6	6	
T 336	×	11.	" " " " Washer	4	0	
T 336	×	12.	$\frac{5}{16}$ " Diameter Rollers (44)	...	each		2	
T 336	×	2.	Countershaft	1	12	6
T 336	×	9.	" Roller Bearing Cage	4	0	
T 358	×	6.	Clutch Operating Sleeve	2	9	
T 358	×	9.	" " " Screw (4)	...	each		9	
T 339	×	2.	" " " Bolt	1	4	
T 354	×	4.	" " " Lever		4	
T 339	×	4.	" " " Ball Cup	1	0	
T 339	×	5.	" " " Cone		4	
			$\frac{1}{4}$ " Diameter Balls (9)	...	per doz.		3	
T 367	×	7.	Clutch Operating Rod	1	4	
M1465	×	16.	" " " " Nut		3	
			" " " " Locking Wire		7	$\frac{1}{2}$
T 339	×	6.	" " " Bearing Dust Cap		4	
T 343	×	8.	" Cable Stop		4	
M 164	×	3.	" " Spring		1	

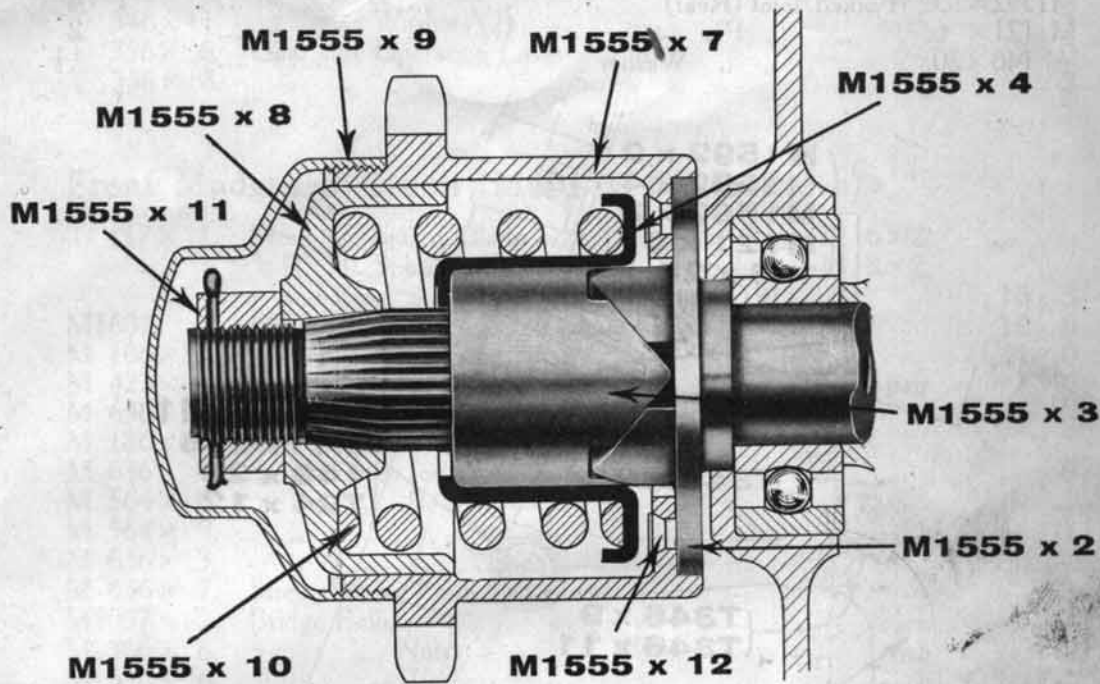
Clutch (4-Speed).

						£	s.	d
M1465 × 14.	Chain Wheel		9	0
	Bearing (R.W.L.S. 10)	1" × 2¼" × 1½"		10	9
M1465 × 2.	" Cover		1	6
M1553 × 7.	Nut for Driving Shaft			6
M1464 × 2.	Outer Serrated Member		5	4
M1464 × 5.	Main Driving Plate		2	9
M1464 × 7.	Secondary Driven Plate	each		5	6
M1464 × 6.	" Driving "	each		2	7
M1464 × 8.	Friction Ring	each		2	0
M1464 × 4.	Main Driven Plate		4	2
M1649 × 4.	Dust Cover			4
M1552 × 2.	Inner Serrated Member		4	9
M1553 × 4.	Roller Ring		6	6
M1553 × 3.	" Plate		4	6
M1552 × 6.	Bearing Housing		2	3
M1553 × 1.	" and Driving Sleeve	2	9	6
M1552 × 5.	Locking Tube			3
M1553 × 13.	Spring		1	0
M1553 × 11.	Nut for Operating Rod			6
M1649 × 3.	Cover for Operating Rod Nut			10
M1553 × 14.	Locking Sleeve			8
M1552 × 4.	Clutch Cap		1	2
M1553 × 5.	Roller	each			3
M1553 × 2.	" Cage		6	0
M1553 × 9.	Distance Piece			5
M1553 × 10.	" Washer...			3
M1465 × 8.	Centralizing Ring		2	0
M1553 × 8.	Spring Stop			1
M1465 × 9.	Bolts (20)...	each			1½
564 × 9.	" Nuts (20)	each			1
	" Washers (Spring) (20)	each			½



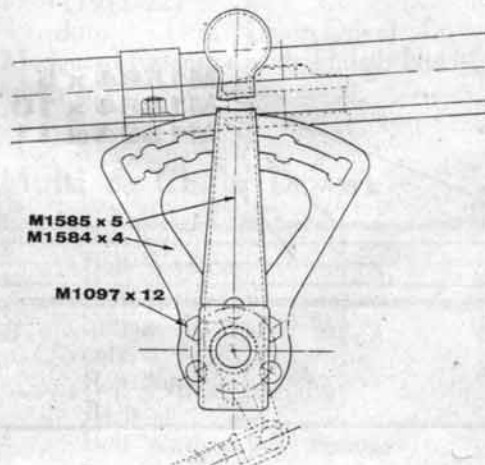
Shock Absorber on Engine Shaft.

					£	s.	d.
M1555 x 3.	Shock Absorber	2	3	
M1555 x 10.	" " Spring	2	3	
M1555 x 4.	" " " Container	2	6	
M1555 x 7.	Chain Ring with Carrier	M1555 x 2 & Rivets	M1555 x 12		13	3	
M1555 x 8.	" " Support	2	9	
M1555 x 9.	Dust Cover	1	4	
M1555 x 11.	Nut for L. H. Axle			6



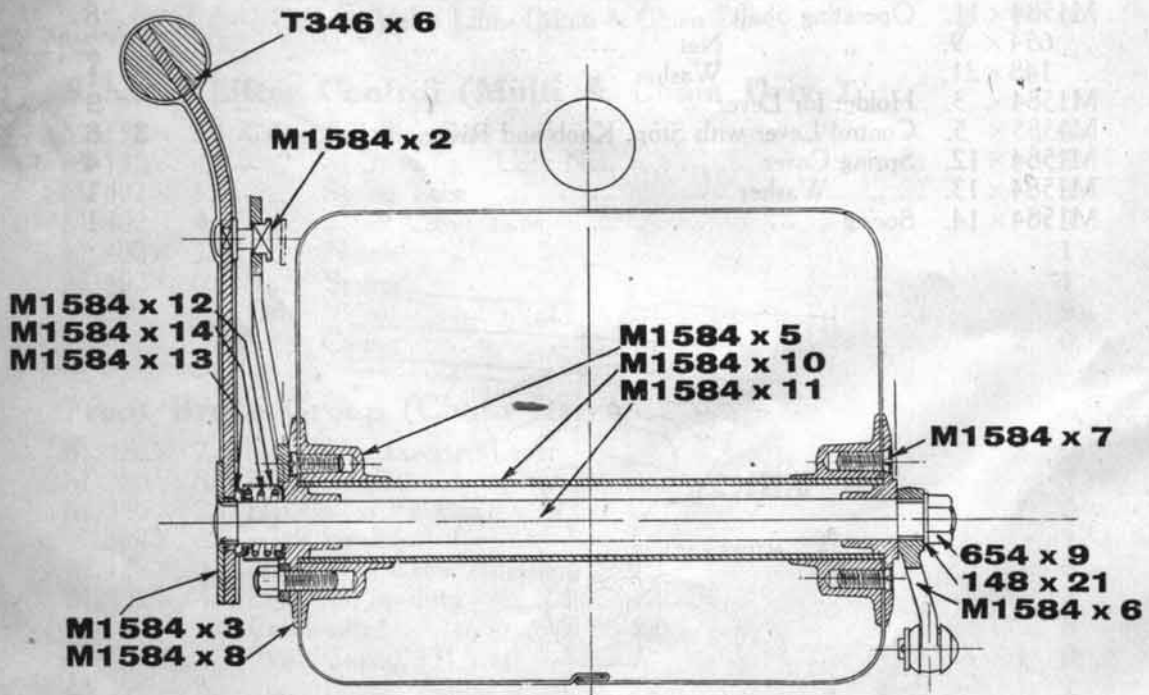
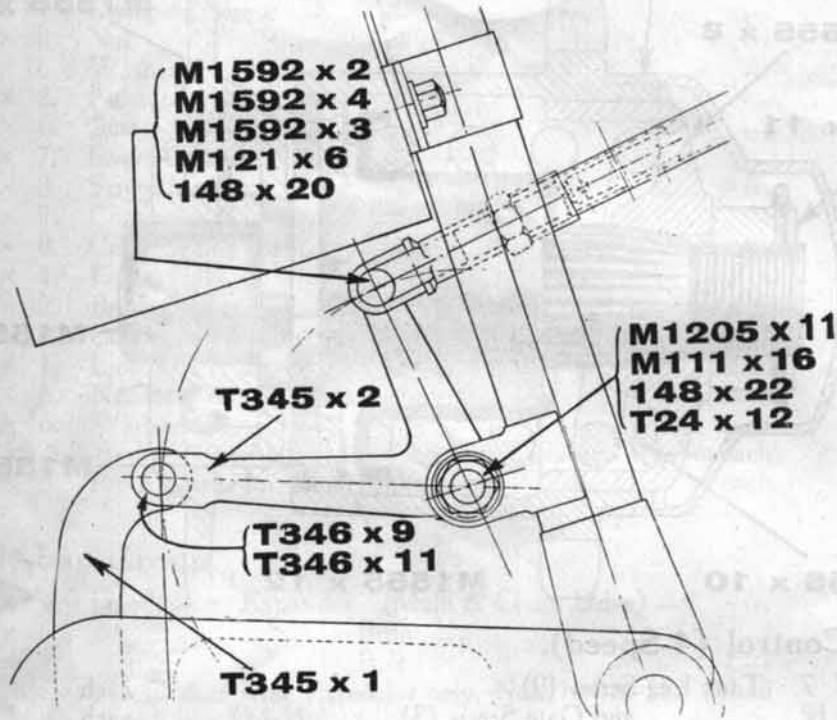
Gear Control (4-Speed).

M1584 x 7.	Tank Lug Screw (9)	each	2		
M1097 x 12.	" " and Gate Screw (3)	each	2		
M1584 x 4.	Gate	2	6	
M1584 x 11.	Operating Shaft			8
654 x 9.	" " Nut			2
148 x 21.	" " Washer			1
M1584 x 3.	Holder for Lever			9
M1585 x 5.	Control Lever with Stop, Knob and Rivet	3	6	
M1584 x 12.	Spring Cover			4
M1584 x 13.	" Washer			1
M1584 x 14.	Spring			1



Gear Control (4-Speed) (continued.)

M1584 × 6.	Front Operating Lever	7	0
T 345 × 5.	Forked Joint (Front)	1	7
M 121 × 6.	" " Pin		2
148 × 20.	" " Washer		1
M1592 × 1.	Operating Tube with Screwed Plug	M1592 × 2	7	0
M1592 × 4.	Lock Nut		4
M1592 × 3.	Forked Joint (Rear)	1	4
M 121 × 6.	" " Pin		2
148 × 20.	" " Washer		$\frac{1}{2}$



Gear Control (4-Speed) (continued.)

T 345 × 2.	Bell Crank Lever	6	6
M1205 × 11.	" " " Pin	1	6
M 111 × 16.	" " " " Nuts (2)		3
T 24 × 12	" " " " Washers (2)		1
T 345 × 1.	Link		8
T 346 × 9.	" Pins (2)		3
T 346 × 11.	" " Washers (2)		1
T 356 × 6.	Gear Box Operating Lever	2	0
T 356 × 8.	" " " " Screw		3

Front Mudguard Group (Multi & Chain Drive)

T 117 × 1.	Front Mudguard Blade with Bridge for Stays T116 × 2, R. H. Splasher T118 × 1, L. H. Splasher T118 × 2, and Front Stand Clip Complete fitted (1911-22) ...	15	3
M1607	Ditto ditto (1923 Chain Drive)	19	0
M 186 × 11.	Thumb Nut for Front Stand Clip	1	0
M 423 × 8.	Stays with Nuts M2090 × 8	1	6
M 636 × 3.	Back Plate for Front Stand Clip }		8
M 186 × 3.	Bolt for ditto		8
M 636 × 4.	Spring Catch for Front Stand Clip		9
M 564 × 6.	" " Bolt... ..		1
M 564 × 9.	" " " Nut		1
M 636 × 3.	" " " Washer		1
M 636 × 7.	Strengthening Plate for Crown		3
M1097 × 2.	Bridge Bolts		3
M 366 × 8.	" " Nuts... ..		2
M 636 × 6.	" " Washers		1
M1177 × 1.	Front Number Plate with Clips, Rivets, Nuts and Washers	1	9

Rear Mudguard Group.

M 127 × 8.	Extension Hinges		2
M 564 × 6.	" " Screws... ..		1
M 564 × 9.	" " " Nuts		1
M 365 × 10.	Chain Stay Bridge Clip		3
M 365 × 9.	" " " " Screw		2
M 365 × 11.	Back " " " "		3
M 365 × 9.	" " " " Screw		2
M1182 × 1.	Rear Mudguard with Extension Bolt M151 × 5 and Screws 564 × 9 (1911-22)	7	6
	Ditto ditto (1923 Chain Drive)	10	6
M1183 × 1.	Rear Mudguard Extension with Thumb Nut M151 × 2 and Washers M151 × 3 fitted	6	0

Stand Group (Multi & Chain Drive).

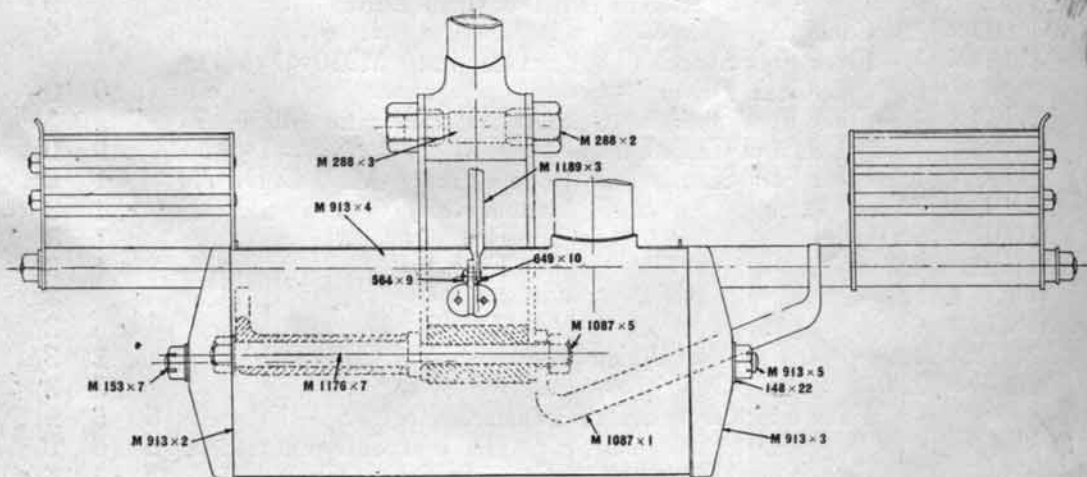
M1530 × 1.	Rear Stand only	16	9
M 64 × 9.	" " Bolt Washers		1
M 64 × 19.	" " Bolts		3
M 347 × 9.	" " Spring	1	3
M1197 × 1.	Front " only	13	6
M 254 × 2.	" " Bolt Nuts		2
M 423 × 11.	" " Bolts		3
	" " Bolt Washers ($\frac{5}{16}$ " Spring)		1

Rear Carrier Group.

		£	s.	d.
	Rear Carrier Top Tube (Multi & Chain Drive) ...	18		6
64 × 14.	Spring Washer for Stay Bolt " " ...			1
M 254 × 2.	Rear Carrier Stay Nut for Bolt " " each			2
M 423 × 11.	" " Bolts (Top) " " each			3
M 433 × 4.	" " L. H. Stay Bolt (Multi) ...			3
M 433 × 5.	" " " " Washers (Multi) ... each			1
M 614 × 3.	" " " " Nut " " ...			3
M1048 × 5	" " Clips for securing Carrier to Frame Back (Multi & Chain Drive) ... each			1 1/2
M1048 × 4.	Bolts for ditto (Multi & Chain Drive) ... each			4
M 654 × 9.	Nuts for ditto " " ... each			2
M1205 × 1.	R. H. Stay Spring Bolt (Multi & Chain Drive) ...			4
M1205 × 1.	L. H. Stay Bolt (Chain Drive) ...			4
M1235 × 1.	Top Plate (Multi & Chain Drive) ...			10
	Rear Carrier R. H Double Stays (Multi & Chain Drive)	6	0	
	" " L. H. " " " " "	6	0	
	Carrier Complete ...	1	15	6

Silencer Group, 998 c.c. Engine (Chain Drive).

T 200 × 3.	Front Exhaust Pipe ...	9	6
T 200 × 4.	Rear " " ...	3	9
M 175 × 3.	Exhaust Pipe Screw ...		3
T 200 × 5.	Extension Pipe with Clip T243 × 8 fitted ...	3	6
T 111 × 10.	Frame Clip for ditto ...		6
M 366 × 10.	" " Bolt ...		3
M 366 × 8.	" " " Nut ...		2
T 243 × 3-4.	Silencer Box only ...	2	6
T 243 × 2.	" " End Cap, L. H. ...	4	9
T 243 × 3.	" " " R. H. ...	1	0
T 243 × 5.	" " Bolt ...	5	0
M 111 × 8.	" " " Nuts ... each		3
	3/8" Spring Washers ... each		1



Silencer Group, 499 c.c. Engine.

		£	s.	d.
M 913 × 4.	Exhaust Box with Clip, Rivets and R. & L. H. End Caps, M913 × 2-3, 1923 (Multi & Chain Drive) ...	5	6	
M 913 × 5.	Bolt for Exhaust Box, 1913-22 (Multi & Chain Drive) ...		8	
M 153 × 7.	Nuts for ditto " " each		2	
148 × 22.	Washers for ditto... .. " " each		1	
M 175 × 3.	Exhaust Pipe Screw " " ...		3	
M 916 × 2.	" " (Multi) " " ...	5	9	
M1358 × 3.	" " 1922-23 (Chain Drive) " " ...	5	9	
M1067 × 1.	" Extension Pipe with Clip (Multi) " " ...	5	3	
M1394 × 2.	" " " " (Chain Drive)... .. " " ...	5	3	
M1189 × 3.	" Box Stay, 1921-23 (Multi & Chain Drive) " " ...		4	
M1189 × 2.	" " Clip, 1921-23 " " " " ...		1	
649 × 10.	" " " Screw, 1921-23 (M. & C. Drive) " " ...		1	
564 × 9.	" " " " Nut, 1921-23 " " " " ...		1	

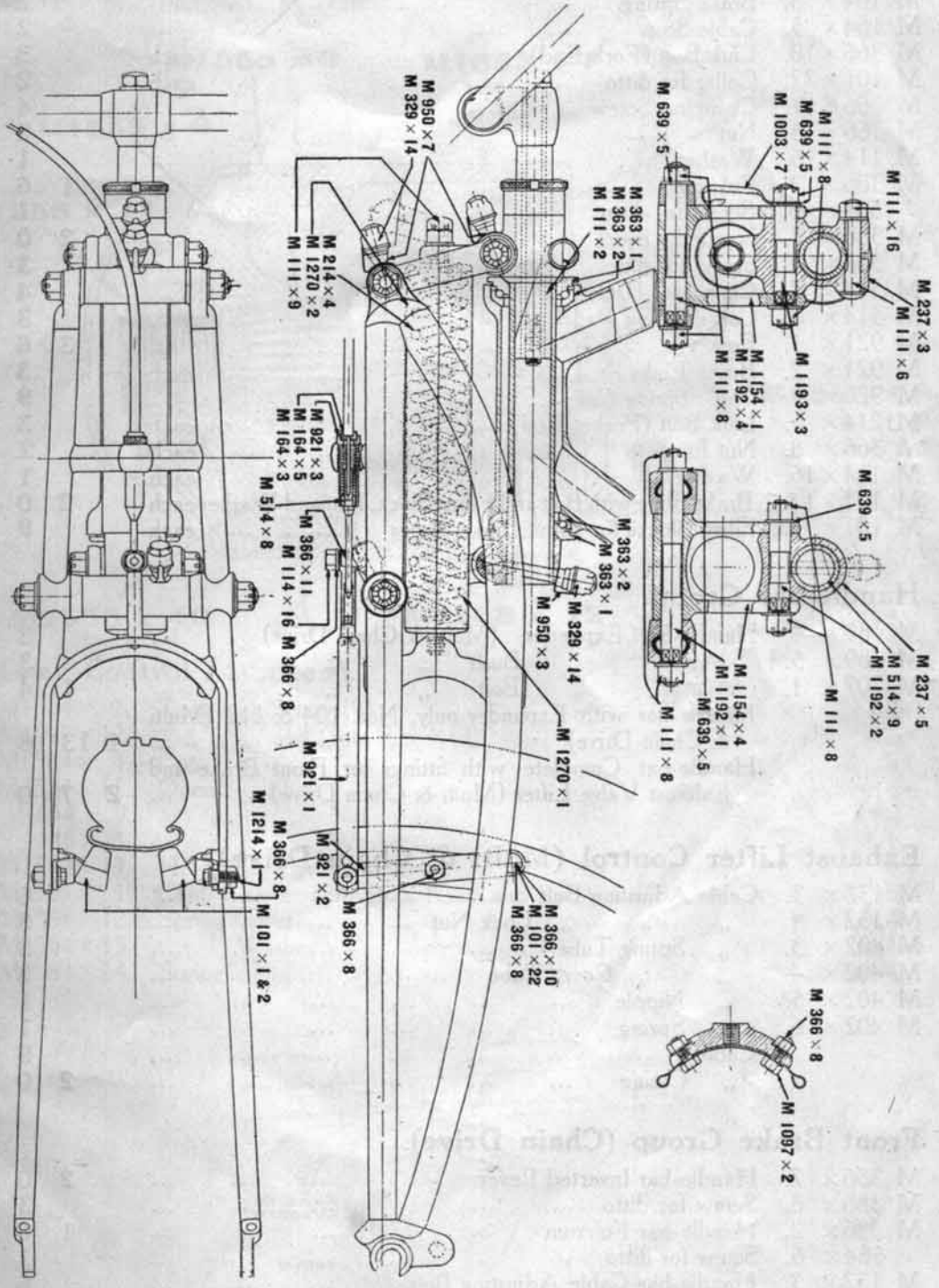
Silencer Group, 750 c.c. Engine.

C 115 × 1.	Silencer Exhaust Pipe " " ...	6	0	
M 175 × 3.	" " " Screw " " ...		3	
C 122 × 2.	" Barrel End Cap, R. H. " " ...	1	3	
C 122 × 3.	" " " " L. H. " " ...	1	3	
C 122 × 4.	" " " " " " " " ...	4	0	
M 913 × 5.	" Bolt " " ...		8	
148 × 22.	" " Washer " " ...		1	
	" " $\frac{3}{8}$ " Spring Washer " " ...		1	
2039 × 8.	" " Nuts... .. " " each		3	
M1067 × 1.	" Extension Pipe with Clip " " ...	5	3	

Front Fork Group.

M 111 × 2.	Ball Head Lock Nut ... (Multi & Chain Drive)...	1	3	
M 111 × 6.	Clamping Bolt for Spring Bracket " " ...		9	
M 111 × 16.	" " Nut " " ...		2	
	" " Spring Washer, $\frac{3}{8}$ " " " ...		1	
M 111 × 9.	Cap Nut " " ...		6	
M 214 × 4.	Front Fork Springs & Bolts M214 × 10 " " ...	3	6	
M 237 × 3.	" " Spring Bracket " " ...	7	6	
M 329 × 14.	" " Lubricator Caps " " each		5	
M 363 × 1.	Head Cones (Top & Bottom) " " each	1	6	
M 363 × 2.	" Cups " " each	1	3	
M 514 × 9.	Steering Column with Lug M237 × 5 fitted (M. & C. Drive)	5	6	
M 950 × 3.	Lubricator for Steering Column, complete " " ...	1	0	
M 950 × 7.	" " Shackles (Multi & Chain Drive) " " ...		9	
M1003 × 7.	Cable Clip " " ...		4	
M1154 × 1.	Front Fork Shackle (Top) and Lubricator M950 × 7 (Multi & Chain Drive) " " ...	9	0	
M1154 × 4.	Front Fork Shackle (Bottom) and Lubricator M950 × 7 (Multi & Chain Drive)... .. " " ...	9	0	
M1192 × 1.	Front Fork Shackle Bolt (Bottom Front) (M. & C. Drive)	1	6	
M1192 × 2.	" " (Bottom Rear) " " ...	1	3	
M1192 × 3.	" " (Top Rear) " " ...	1	3	
M1192 × 4.	" " (Top Front) " " ...	1	3	
M 639 × 5.	" " Washers " " each		1	
M 111 × 8.	" " Nuts (Castellated) " " each		3	
M1270 × 1.	" Inner Spring Sheath (Multi & Chain Drive) " " ...	2	3	
M1270 × 2.	" Outer " " " " " " ...	2	3	
	Front Fork Girder built up & enamelled for M. Speed Models	5	5	9
	" " " " " " C. Driven Models	5	5	9
	Front Fork complete with Fittings (Multi & Chain Drive)	7	12	6

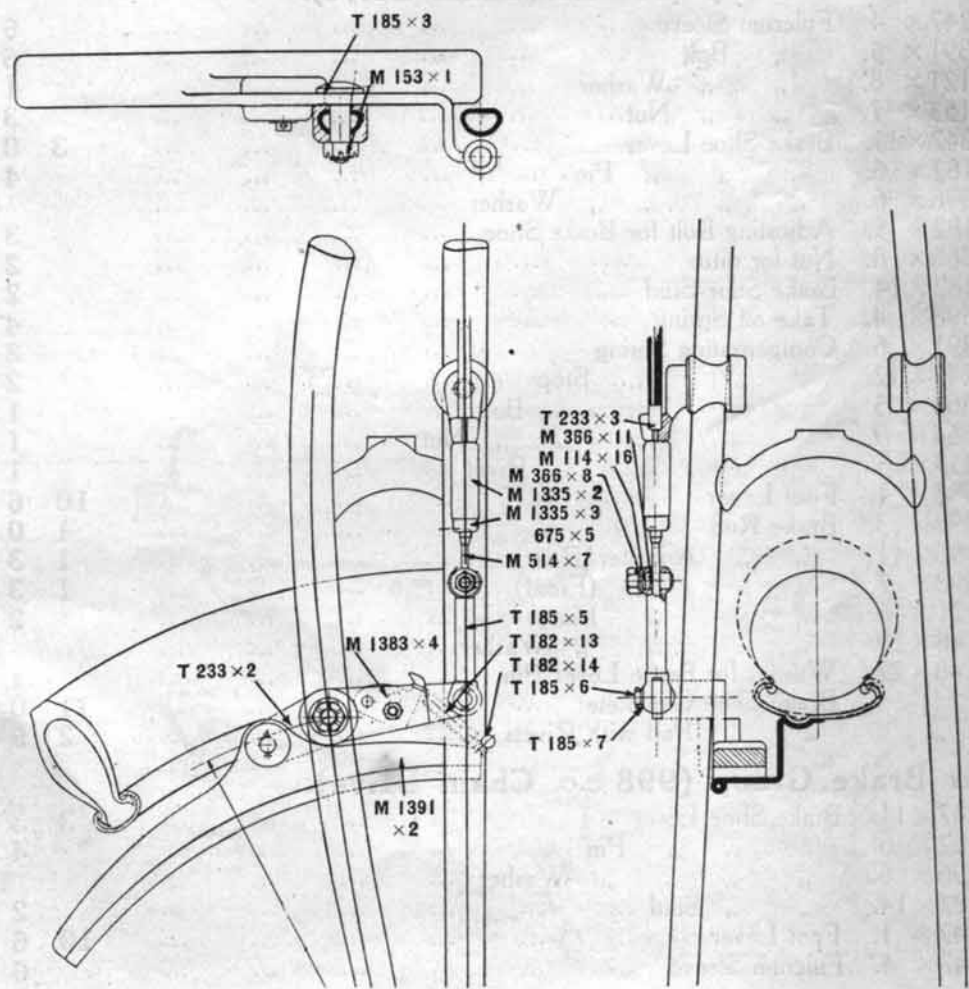
FRONT FORK.



104



112



Front Brake Group (Chain Drive) (continued).

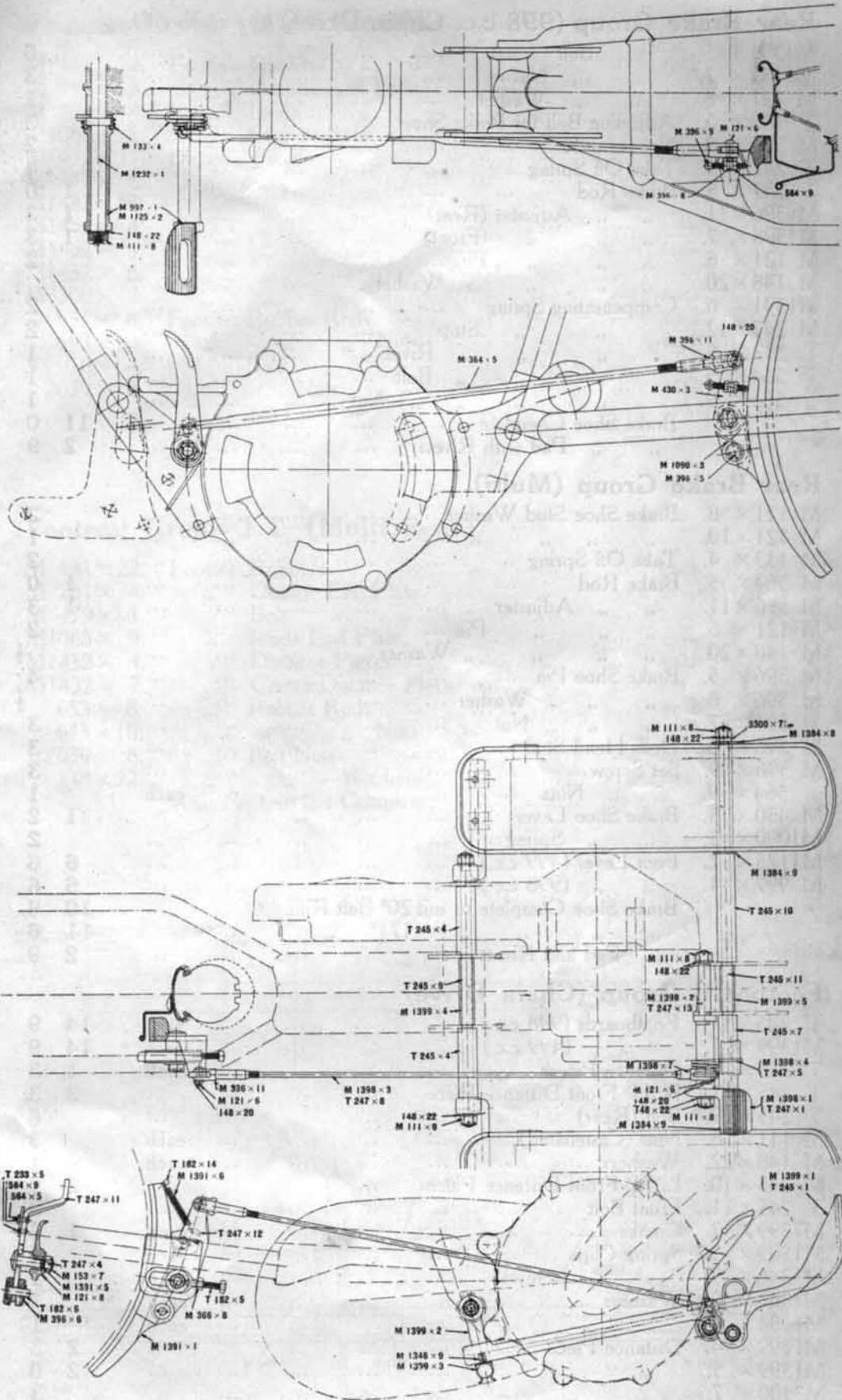
		£	s.	d.
T 182 × 6.	Brake Shoe Pin			3
396 × 6.	Washer for ditto			1
T 182 × 13.	Brake Shoe Compensating Spring			2
T 182 × 14.	Dolls Head Stud			3
T 185 × 3.	Brake Shoe Link Pin			6
M 153 × 1.	Nut for ditto (Castellated)			3
T 185 × 5.	Connector Link	1	9	
T 185 × 6.	Pin for ditto			3
T 185 × 7.	Washer for ditto			1
T 233 × 2.	Brake Shoe Lever	3	0	
T 233 × 3.	Cable Anchor	1	0	
M 366 × 11.	Clamping Screw			3
M 366 × 8.	Nut for ditto			2
M 114 × 16.	Washer for ditto			1
M 514 × 7.	Connector Rod			4
675 × 5.	Cable Spring			2
M1335 × 2.	Outer Tube for ditto			3
M1335 × 3.	Inner " "			3
M1383 × 4.	Spring Stop			2
T 233 × 5.	Rivet for ditto			1
564 × 5.	Bolt "			1
564 × 9.	Nut "			1
M1391 × 1.	Brake Shoe Complete	11	0	
	" " Pad with Rivets	2	9	

Rear Brake Group (499 c.c. Chain Drive).

T 247 × 4.	Fulcrum Sleeve			6
M1391 × 5.	" Bolt			6
M 121 × 8.	" " Washer			1
M 153 × 7.	" " Nut			3
T 247 × 11.	Brake Shoe Lever	3	0	
T 182 × 6.	" " " Pin			4
M 396 × 6.	" " " Washer			$\frac{1}{3}$
T 182 × 5.	Adjusting Bolt for Brake Shoe			3
M 366 × 8.	Nut for ditto			2
T 182 × 14.	Brake Shoe Stud			2
M1398 × 4.	Take off Spring			4
M1391 × 6.	Compensating Spring			2
M 247 × 12.	" " Stop			2
M 564 × 5.	" " " Bolt			1
M 564 × 9.	" " " Nut			1
T 233 × 5.	" " " Rivet			1
M1398 × 1.	Foot Lever	10	6	
M1398 × 3.	Brake Rod	1	0	
M 396 × 11.	" " Adjuster (Rear)	1	3	
M1398 × 7.	" " " (Front)	1	3	
M 121 × 6.	" " " Pin			2
M 148 × 20.	" " " Washer			$\frac{1}{2}$
M 148 × 22.	Washer for Brake Lever Pin			1
	Brake Shoe Complete	11	0	
	" " Pad with Rivets	2	9	

Rear Brake Group (998 c.c. Chain Drive).

T 247 × 11.	Brake Shoe Lever	3	3	
T 182 × 6.	" " " Pin			4
M 396 × 6.	" " " Washer			$\frac{1}{3}$
T 182 × 14.	" " Stud			2
T 247 × 1.	Foot Lever	10	6	
T 247 × 4.	Fulcrum Sleeve			6



Rear Brake Group (998 c.c. Chain Drive) (continued).							£	s.	d.
M1391	×	5	" Bolt			6
M 153	×	7	" " Nut			3
M 121	×	8	" " Washer			1
T 182	×	5	Adjusting Bolt for Brake Shoe			3
M 366	×	8	Nut for ditto			2
T 247	×	5	Take Off Spring			4
T 247	×	8	Brake Rod	1		0
M 396	×	11	" " Adjuster (Rear)	1		3
M1398	×	7	" " " (Front)	1		3
M 121	×	6	" " " Pin			2
M 148	×	20	" " " " Washer			$\frac{1}{2}$
M1391	×	6	Compensating Spring			2
M 247	×	12	" " Stop			2
T 233	×	5	" " " Rivet			1
564	×	5	" " " Bolt			1
564	×	9	" " " Nut			1
			Brake Shoe Complete	11		0
			" " Pad with Rivets	2		9

Rear Brake Group (Multi).

M 121	×	8	Brake Shoe Stud Washer			2
M 121	×	10	" " " " "			1
M 133	×	4	Take Off Spring	1		0
M 364	×	5	Brake Rod	1		3
M 396	×	11	" " Adjuster			2
M 121	×	6	" " " Pin			$\frac{1}{2}$
M 148	×	20	" " " " Washer			4
M 396	×	5	Brake Shoe Pin			$\frac{1}{2}$
M 396	×	6	" " " Washer			3
M 153	×	7	" " " Nut			3
M 396	×	8	Dolls Head Stud			3
M 396	×	9	Set Screw			1
564	×	9	" " Nuts	each		1
M 430	×	3	Brake Shoe Lever	1		2
M1090	×	3	" " Spring			2
M1125	×	2	Foot Lever (499 c.c.)	6		6
M 997	×	1	" " (998 c.c.)	6		6
			Brake Shoe Complete to suit 20" Belt Rim	10		6
			" " " " 17 $\frac{1}{2}$ " "	11		6
			" " Pad and Rivets	2		9

Footboard Group (Chain Drive)

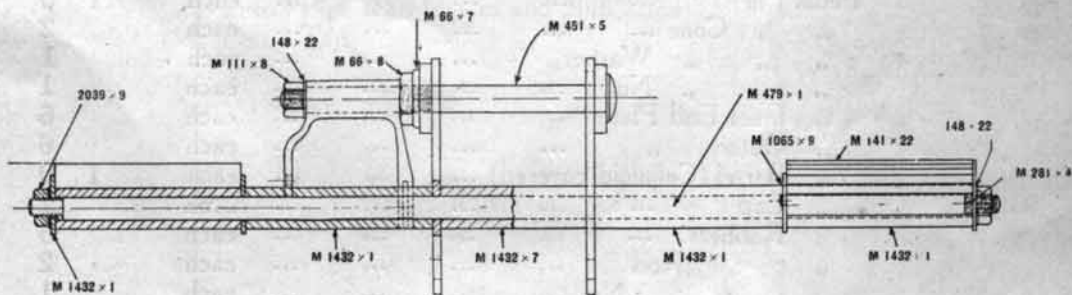
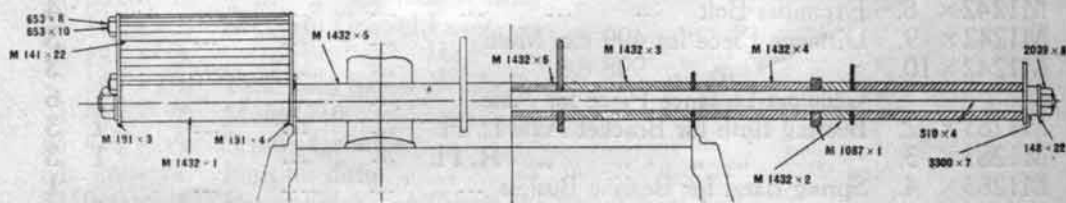
T 245	×	1	Footboards (998 c.c.)	each	14	9
M1399	×	1	" (499 c.c.)	each	14	9
T 245	×	4	Distance Pieces	each	1	3
T 245	×	7	R. H. Front Distance Piece		3	3
T 245	×	9	Bolt (Rear)			6
M 111	×	8	Nuts (Castellated)	each		3
M 148	×	22	Washers	each		1
M 245	×	10	L. H. Front Distance Piece		2	9
T 245	×	11	Front Bolt			9
M1399	×	2	Cranks	each	1	6
M1399	×	3	Spring Clips	each		2
M1346	×	9	" " Screws	each		1
M1384	×	8	Washers	each		1
M1384	×	9	" " " "	each		1
M1399	×	4	Distance Piece		2	3
M1399	×	5	" " " "		2	0
M3300	×	7	" " " "			3

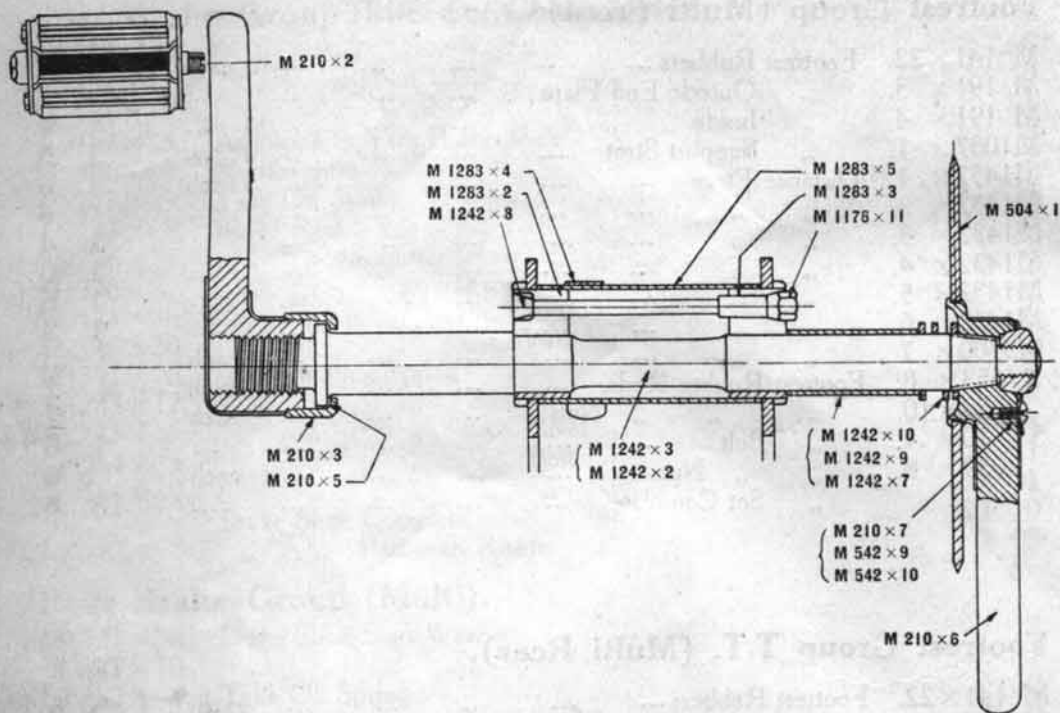
Footrest Group (Multi Front).

						£	s.	d.
M 141 × 22.	Footrest Rubbers	each			6
M 191 × 3.	" Outside End Plate			6
M 191 × 4.	" Inside "			4
M1087 × 1.	" Support Strut	1	9	
M1432 × 1.	Distance Piece	each	1	6	
M1432 × 2.	" "			6
M1432 × 3.	" "	1	4	
M1432 × 4.	" "	1	6	
M1432 × 5.	" "	1	6	
M1432 × 6.	" "	1	3	
M3300 × 7	" "	each			3
653 × 8.	Footrest Rubber Rods	each			2
653 × 10.	" " " Nuts	each			1
S 10 × 4.	" Bolt	1	6	
2039 × 8.	" " Nuts	each			3
	" Set Complete	18	6	

Footrest Group T.T. (Multi Rear).

M 141 × 22.	Footrest Rubbers	each			6
M 281 × 4.	" Outside End Plate			3
M 479 × 1.	" Bolt	1	6	
M1065 × 9.	" Inside End Plate			2
M1432 × 4.	" Distance Pieces	each	1	3	
M1432 × 7.	Centre Distance Piece	1	0	
653 × 8.	" Rubber Rods	each			2
653 × 10.	" " " Nuts	each			1
2039 × 8.	" Bolt Nuts	each			3
148 × 22.	" " Washers	each			1
	Rear Footrest Set Complete	12	6	



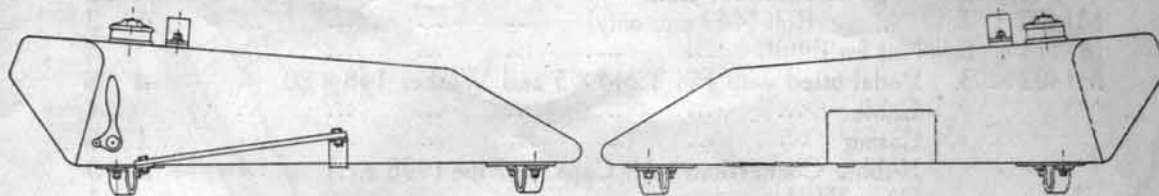


Pedalling Gear Group (Multi).

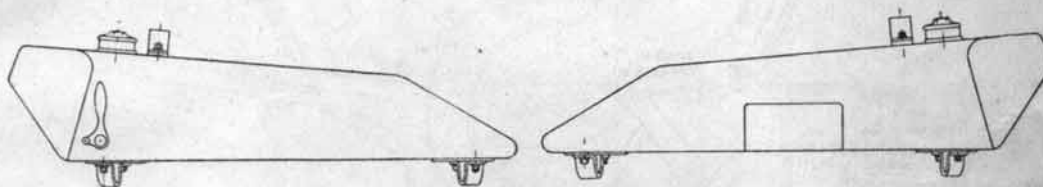
		£	d.
M 210 x 2.	L. H. Crank	5	6
M 210 x 3.	" " Cover	1	0
M 210 x 5.	" " " Washer		1
M 210 x 6.	R. H. Crank with Chain Wheel M504 x 1 fitted	9	6
M 210 x 7.	Axle Nut		8
M 542 x 9.	" " Locking Plate		2
M 542 x 10.	" " " Screw		1
M 1176 x 11.	Expander Bolt Nut		6
M 1242 x 2.	Bracket Axle for 499 c.c. Multi	7	6
M 1242 x 3.	" " " 998 c.c. "	7	6
M 1242 x 7.	Spring Washer		1
M 1242 x 8.	Expander Bolt		4
M 1242 x 9.	Distance Piece for 499 c.c. Multi		3
M 1242 x 10.	" " " 998 c.c. "		3
	Celluloid Distance Piece for Axle		6
M 1283 x 2.	Bearing Bush for Bracket Axle L. H.	1	3
M 1283 x 3.	" " " " " R. H.	1	3
M 1283 x 4.	Spring Band for Bearing Bushes		1
M 1283 x 5.	Barrel for Bearing Bushes	1	3
	Roller Chain, 1/2" x 1/8"		
	Pedals complete per pair	7	0
	Pedal Pin each	1	0
	" " Cone each		2
	" " " Washer each		1
	" " " Nut each		1
	Inner End Plate each		6
	Outer " each		6
	Barrel (Celluloid covered) each	1	0
	Cap each		2
	Rubbers each		5
	" " Rod each		2
	" " " Nut each		1

Maker's prices current

PETROL TANKS.



Multi.



Chain Drive.

Petrol Tank Group.

		£	s.	d.
	Petrol Tank, less Filler Cap, Petrol Tap and Clips (Multi & Chain Drive	3	17	6
M 109 × 3.	Tank Clip ... (Multi & Chain Drive) ... each			9
M1052 × 6.	" " Leather Washer " "			1
M 142 × 2.	Magneto Control Lever " "			9
M 142 × 3.	" " Rod " "			6
148 × 20.	Tank Clip Screw Washers each			1
M 419 × 2.	Multi Gate	1	9	
M 419 × 5.	Screws for ditto			3
M 69 × 17.	Nuts for ditto each			2
M1069 × 2.	Petrol Filler Cap (Multi & Chain Drive)	1	6	
M1097 × 10.	Tank Clip Screws " " each			3
M1205 × 2.	" " " " " " each			3
M 666 × 13	" " " Locking Spring (Multi & Chain Drive)...			1
	Petrol Pipe with Unions and Nuts fitted	2	0	
	Petrol Tap	2	0	

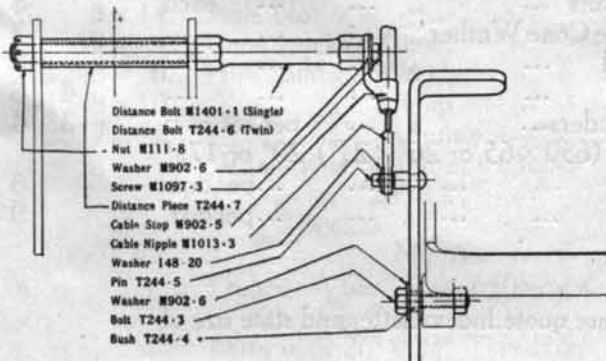
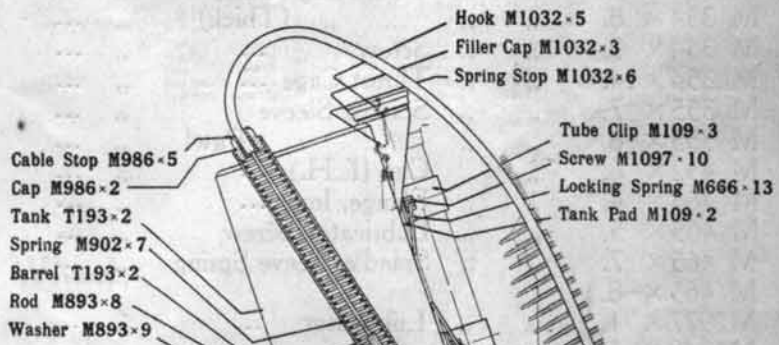
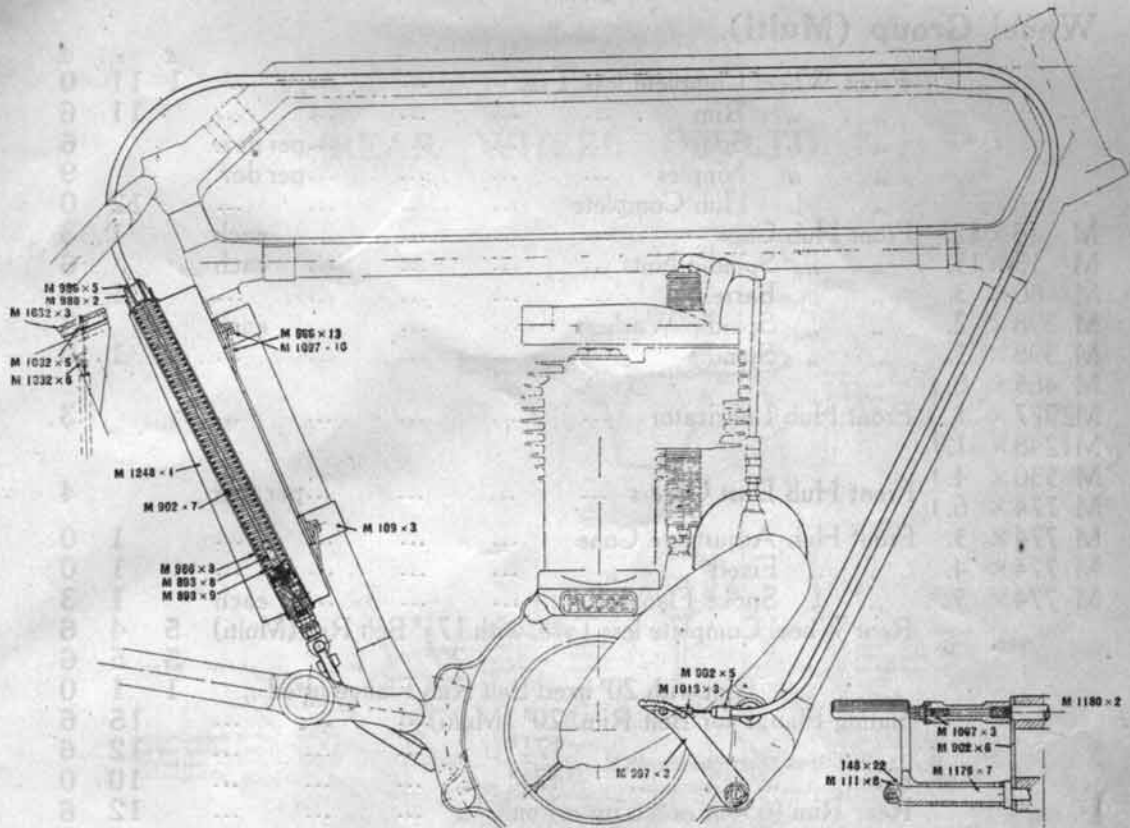
Oil Tank Group (Chain Drive).

		£	s.	d.
T 193 × 2.	Oil Tank with Pump Barrel only fitted	1	7	0
T 244 × 3.	Bolt for Pedal			4
T 244 × 8.	Nut for ditto			2
T 244 × 4.	Bush for ditto			4
T 244 × 6.	Distance Bolt (998 c.c. only)		1	3
T 244 × 7.	„ Piece for Bolt			10
M1402 × 1.	„ Bolt (449 c.c. only)		1	3
M 111 × 8.	Nut for ditto			3
M1402 × 3.	Pedal fitted with Pin T244 × 5 and Washer 148 × 20 ...		4	6
	Cable			4
	Casing		1	6
	Rubber Connections with Caps for Pipe (998 c.c.) ...		2	0
	Fibre Washer			1

Other Fittings as for Multi, see below.

Oil Tank Group (Multi).

M1248 × 1.	Oil Tank with Pump Barrel only fitted	1	7	0
M 109 × 3.	Tube Clips each			9
M 610 × 7.	Filler Cap Spring			2
M 666 × 13.	Tube Clip Locking Springs each			1
M 893 × 8.	Tank Plunger Rod			9
M 893 × 9.	„ Washer for ditto			1
M 902 × 5.	Oil Cable Swivelling Stop			8
M 902 × 7.	Tank Spring			9
M 986 × 2.	Cap for Pump Barrel			6
M 986 × 5.	Cable Stop for Cap			4
M 997 × 3.	Oil Pedal		5	6
M1013 × 3.	„ Cable Eylet Nipple			2
M1032 × 3.	Filler Cap			9
M1032 × 5.	„ „ Hook			1
M1032 × 6.	„ „ Spring Stop }			2
M1097 × 3.	Oil Cable Distance Stud Screw			1
M 902 × 6.	„ „ „ Washer			3
M1097 × 10.	Tube Clip Screws each			1
M1180 × 2.	Distance Piece for Support Plate		1	3
M1180 × 4.	Support Plate for Distance Piece			5
M1097 × 3.	Bolt for ditto			2
M 902 × 6.	Washer for ditto			1
M1180 × 3.	Nut for ditto			2
M1190 × 1-2.	Oil Pipe with Union		1	4
	Tube Clip Leather Washers 1" × ⁵ / ₁₆ " each			1
	Non-Return Valve		1	6
	Cable			8
	„ Casing		3	6
	Oil Tap, No. 6		2	0
	Rubber Connection for Pipe with Caps			9
	Leather Washer for Pump Plunger each			2



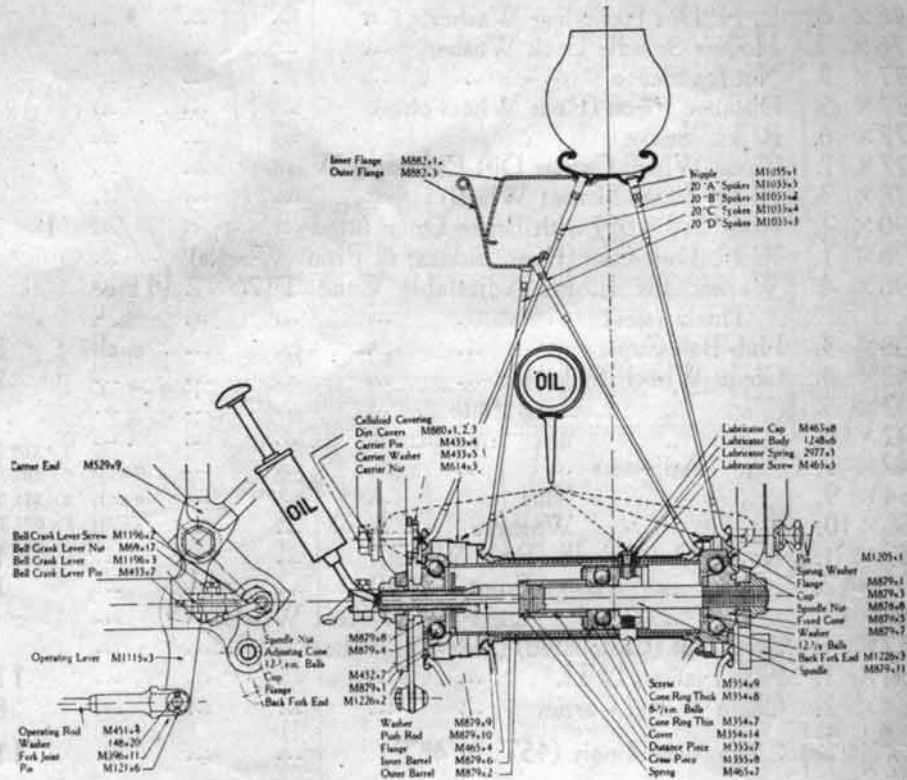
Foot Oiler Lever M1402-2

Wheel Group (Multi).

		£	s.	d.
	Front Wheel Complete less Tyre	1	11	0
	" " Rim		11	6
	" " Spokes ... per doz.			6
	" " Nipples ... per doz.			9
	" " Hub Complete		12	0
M 13×12.	Front Hub Cups ... each		1	3
M 13×15.	" " Spindle Nuts ... each			6
M 80×3.	" " Barrel...		1	6
M 398×2.	" " Spindle Washers ... each			3
M 398×5.	" " Spindle		1	0
M 465×8.	Front Hub Lubricator			3
M2977×1.				
M1248×1.	Front Hub Dust Covers ... per pair			4
M 530×4.				
M 774×6.	Front Hub Adjustable Cone		1	0
M 774×3.			1	0
M 774×4.	" " Fixed		1	3
M 774×5.	" " Spoke Flanges ... each			
	Rear Wheel Complete less Tyre, with 17½" Belt Rim (Multi)	5	4	6
	" " " " " 20" " " " "	5	5	6
	" " Rim with 20" fixed Belt Rim Flange fitted "	1	1	0
	Sliding Flange for Belt Rim, 20" (Multi)...		15	6
	" " " " 17½" " " " "		12	6
	Fixed " " " 17½" " " " "		10	0
	Rear Rim (650m/m×65m/m) only		12	6
	" Hub Complete	1	15	0
M 354×7.	" " Cone Ring (Thin)			5
M 354×8.	" " " " (Thick)			6
M 354×9.	" " Screw ... each			2
M 354×14.	" " Thrust Cage		1	3
M 355×7.	" " Spindle Sleeve			5
M 355×8.	" " " " Pawl			3
M 432×6.	" " Cup (L.H.)		2	0
M 465×4.	" " Flange, Inner...		1	0
M 465×5.	" " Lubricator Screw			4
M 465×7.	" " Spindle Sleeve Spring			1
M 465×8.	" " Lubricator			3
M2977×1.				
M1248×1.	" " Flanges, Outer		1	6
M 879×1.			4	6
M 879×2.	" " Outer Barrel (Celluloid Covered) (Multi)		2	9
M 879×3.	" " Cup, R. H. ... (Multi)...		1	6
M 879×4.	" " Adjustable Cone		1	6
M 879×5.	" " Fixed Cone		2	0
M 879×6.	" " Inner Barrel			1
M 879×7.	" " Fixed Cone Washer			8
M 879×8.	" " Spindle Nuts ... each			3
M 879×9.	" " Adjustable Cone Washer			2
M 879×10.	" " Push Rod		4	6
M 879×11.	" " Spindle		3	4
M 880×1-2-3.	" " Dirt Excluders... per set of 6			
	Rear Wheel Spokes (650×65 or 26"×2¼") 20" or 17½"			6
	Belt Rim ... per doz.			9
	Rear Wheel Nipples ... per doz.			

NOTE.—When ordering Spokes please quote Index Letter and state size of Wheel and Belt Rim.

REAR WHEEL (MULTI).



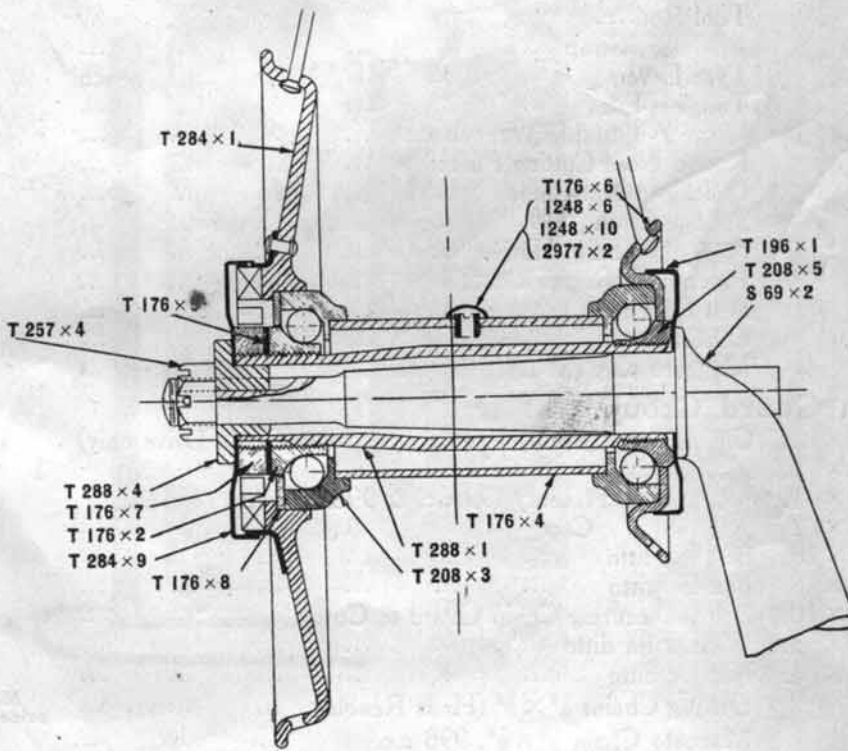
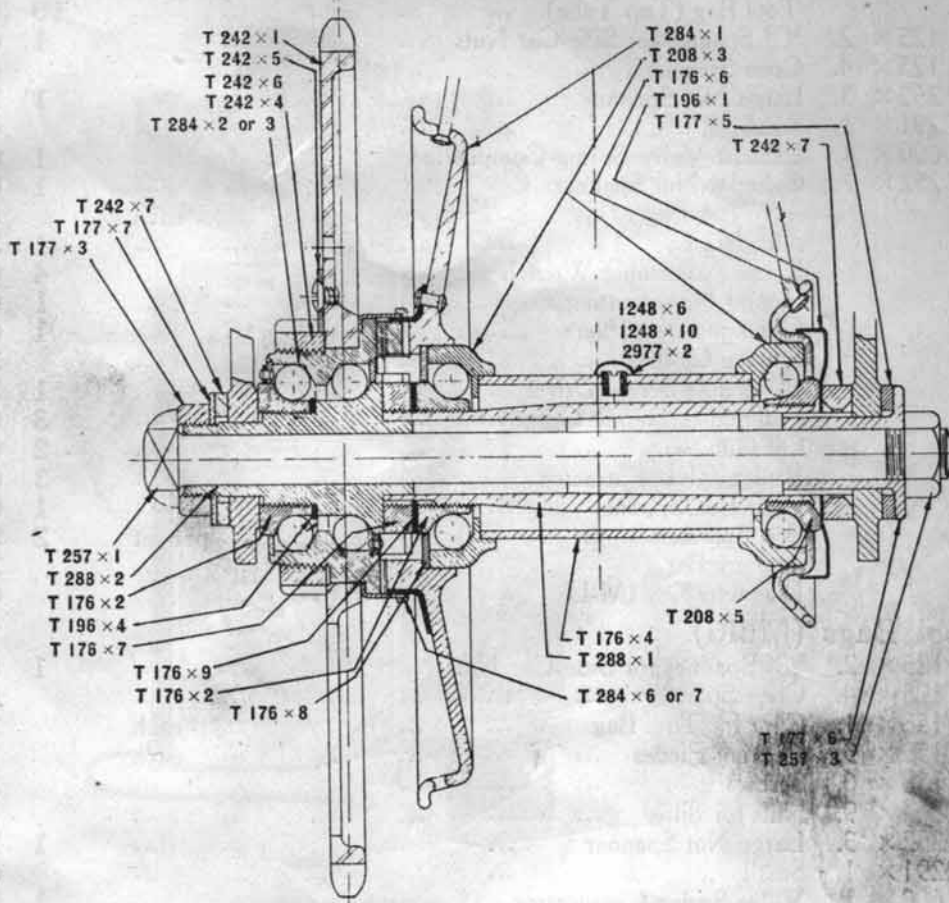
Side-Car Dished Wheel.

							£	s	d
C	8 × 3.	Outer Hub Cup		1	9
C	8 × 4.	Inner "		2	3
C	8 × 5.	Hub Barrel		1	0
C	8 × 7.	Outer Spoke Flange		1	9
C	59 × 1.	Inner "		1	6
C	8 × 8.	Hub Cap		1	3
C	8 × 9.	" Fixed Cone		1	6
M	774 × 3.	" Adjusting Cone		1	0
C	8 × 11.	" Inner Dust Cover			2
C	8 × 14.	Axle Nut			3
C	59 × 4.	Cone Locking Plate			1
	1248 × 6.	Hub Lubricator Body			3
	1248 × 10.	" " Cap			
	2977 × 7.	" " Spring			
		Wheel Rim. 650m/m × 65m/m		12	0
		" " 26" × 2¼"		8	0
		" Spokesper doz.			6
		" Nipplesper doz.			9
		Dished Wheel with 650m/m × 65m/m Tyre Rim, fitted		1	10
		with Hub Cap only		1	6
		Ditto with 26" × 2¼" Tyre Rim		1	6

Interchangeable Wheels (Chain Drive).

		£	s.	d.
T 176 × 2.	L. H. Adjustable Cone for Chain Wheel Carrier	...	1	6
T 176 × 4	Hub Barrel	...	2	6
T 176 × 6.	" Flange R. H.	...	1	3
T 176 × 7.	Hollow Spindle Lock Nut	...		9
T 176 × 8.	L. H. Dirt Excluding Washer	...		1
T 176 × 9.	Hollow Spindle Lock Washer	...		1
T 177 × 3.	Nut for Sleeve	...		9
T 177 × 5.	Distance Piece (Rear Wheel only)	...		9
T 177 × 6.	R. H. Sleeve	...		9
T 177 × 7.	Chain Wheel Carrier Dirt Excluding Washer	...		2
T 178 × 3.	R. H. Sleeve (Front Wheel)	...		9
T 190 × 1.	Rim (650 × 65) with Brake Drum fitted	...	1	1 0
T 196 × 1.	R. H. Dust Cap (Rear, Sidecar & Front Wheels)	...		6
T 196 × 4	Washer for L. H. Adjustable Cone T176 × 2 (Three Thicknesses)	... each		1
T 208 × 3.	Hub Ball Cups	... each	3	3
T 242 × 4.	Chain Wheel Lock Nut	...	2	3
T 242 × 5.	" " Locking Plate	...		2
T 242 × 6.	" " " " Screw	...		1
T 242 × 7.	" Adjusters	... each	1	0
654 × 9.	" " Nuts	... each		2
66 × 10.	" " Washers	... each		1
T 257 × 1.	Knock Out Spindle (Rear Wheel)	...	1	3
T 257 × 2.	" " " (Front Wheel)	...	1	3
T 257 × 3.	" " " Nut (Front or Rear Wheel)...	...		6
T 257 × 4.	Axle Nut (Castellated) (Side-Car Wheel only)	...		6
T 284 × 1.	Hub Flange, L. H.	...	11	6
T 284 × 2.	Chain Wheel Carrier	...	8	6
T 284 × 5. }	Chain Wheel only (45T. or 48T.)	...	11	0
T 242 × 1. }	Chain Wheel and Carrier Complete	...	1 7	0
T 284 × 6.	Outer Dust Cover	...		6
T 284 × 9.	L. H. Dust Cap (Side-Car and Front Wheel)	...		6
T 288 × 1.	Hollow Spindle with Fixed Cone T208 × 5 and Adjusting Cone T176 × 2	...	7	6
T 288 × 2.	Sleeve for Carrier	...	4	9
T 288 × 3.	L. H. Sleeve (Front Wheel)	...		6
T 288 × 4.	" " (Side-Car Wheel only)	...		6
M1248 × 6. }	Hub Lubricator	...		3
M1248 × 10. }		Spokes	... per doz.	6
M2977 × 2. }		" Nipples	... per doz.	9
	Hub Complete	...	1 10	6
	Interchangeable Wheel Complete less Tyre	...	3 3	6

INTERCHANGEABLE WHEELS.



Tool Bag and Kit (Chain Drive)

		£	s.	d.
	Tool Bag (Top Tube)	10	6	
M 125 × 2.	"C" Spanner for Side-Car Nuts	1	0	
M 125 × 4.	Cone Spanner		6	
M 252 × 3.	Large Nut Spanner	1	2	
J 2291 × 1.	Small " "		6	
M 600 × 1.	Exhaust Valve Spring Compressor	1	0	
M 252 × 7.	Cylinder Nut Spanner	1	0	
	Tyre Levers each		6	
	Tangless File	1	3	
	Large Adjustable Wrench	4	6	
	Round Nose Cutting Pliers	1	6	
	Quickgrip Nut Pliers	1	0	
	Sponge Cloth		3	
	Reversible Screw Driver	1	3	
	Patchquick Repair Outfit... ..	3	0	
	Oil Gun	2	6	
	Rudge Rivet Extractor	3	0	
	Gear Box Spanner	1	0	
	Box Spanners per set	2	9	
	Tommy Bar		2	
	Magneto Key (M-L)		6	

Tool Bags (Multi).

M 125 × 2.	"C" Spanner for Side-Car Nuts	1	0	
M 125 × 4.	Cone Spanner		6	
M 158 × 1.	Clips for Tool Bag each		2	
M 158 × 3.	Packing Pieces each		1	
M 158 × 6.	Screws		2	
J 564 × 9.	Nuts for ditto		1	
M 252 × 3.	Large Nut Spanner	1	2	
J 2291 × 1.	Small " "		6	
M 600 × 1.	Valve Spring Compressor	1	0	
M1034 × 1.	Tool Bag	9	6	
M 252 × 7.	Cylinder Nut Spanner	1	0	
	Tool Roll... ..	2	9	
	" " Strap		6	
	Tyre Levers each		6	
	Tangless File	1	3	
	Large Adjustable Wrench	4	6	
	Round Nose Cutting Pliers	1	6	
	Quickgrip Nut Pliers	1	0	
	Sponge Cloth		3	
	Reversible Screw Driver	1	3	
	Patchquick Repair Outfit... ..	3	0	
	Belt Punch	2	6	
	Oil Gun	2	6	
	Magneto Key (M-L)		6	

Chain Guard Group.

M1472 × 1.	Chain Cover (Front) 499 c.c. (Chain Drive only)	18	6	
T 303 × 1.	" " " 998 c.c. " "	1	1	0
M1440 × 1.	" Guard (Rear) 499 c.c. & 998 c.c. " "	5	6	
M1434 × 2.	" " Clip		3	
M 366 × 10.	Bolt for ditto		3	
M 366 × 8.	Nut for ditto		2	
M1097 × 10.	Bolt for securing Chain Guard to Cover		3	
M1434 × 3.	Washer for ditto		1	
M 366 × 8.	Nut for ditto		2	
	Driving Chains $\frac{5}{8}$ " × $\frac{3}{8}$ " (Hans Renold)			
	Magneto Chain $\frac{1}{2}$ " × $\frac{1}{8}$ ", 998 c.c.			

Maker's prices current

TOOL KITS.

LEATHER TOOL ROLL
with 2 Pockets and Strap
contains:-

- Tangleless Half-round File
- Solid File
- Magnetic Spanner
- Large Nut Spanner
- Exhaust Valve Spring Compressor
- Small Nut Spanner
- C-Spanner (Sidecar Nuts)
- Quick Grip Pliers
- Round Nose Cutting Pliers
- Cone Spanner
- Cylinder Nut Spanner
- Tyre Levers (2)
- Reversible Screw-driver

Box Spanners for Gear Box

Rudge Rivet Extractor

Oil Gun

Adjustable Spanner

Gear Box Eccentric Adjuster Spanner

Rudge Wrinkles

PATCHOLIC PATCHES

LEATHER TOOL-ROLL
with 2 Pockets and Strap
contains:-

- Tangleless half-round File
- Belt Piercer
- Magnetic Keys (2)
- Tyre Levers (2)
- Quick Grip Nut Pliers
- Small Nut Spanner
- C-Spanner, sidecar nuts
- Round Nose Cutting Pliers
- Exhaust Valve Spring Compressor
- Large Nut Spanner
- Cone Spanner
- Cylinder Nut Spanner
- Reversible Screw-driver

Large Adjustable Wrench

Sponge Cloth

Oil Gun

Rudge Wrinkles

PATCHOLIC PATCHES

Light and Touring Side-Car Chassis.

			£	s.	d.
S	115 × 1.	Side-Car Axle for Interchangeable Wheel, with S69 × 2 & S82 × 7 fitted	2	0	0
S	72 × 1.	Side-Car Axle for Fixed Dished Wheel	14	6	
S	93 × 1.	Frame	1	15	0
S	82 × 4.	Chain Stay Bracket (Multi & Chain Drive)	4	0	0
S	3 × 9.	Clip for ditto	2	0	0
S	3 × 13.	Bolts... .. each			5
S	3 × 4.	"C" Nut for Chain Stay Bracket each	3	0	
S	3 × 12.	Lock Nut for ditto	2	0	
S	82 × 3.	Outer Rear Attachment Rod, with Clip S1 × 5 & Bottom Fork fitted (Multi)	8	6	
S	82 × 7.	Outer Rear Attachment Rod (Chain Drive)	8	6	
S	2 × 10.	Bolt for Top End of Outer Rear Attachment Rod			6
	148 × 22.	Washer for ditto			1
M	111 × 16.	Nut for ditto			2
S	73 × 5.	Spring Straps each			9
S	78 × 7.	L. H. Spring Clip each	1	0	0
S	83 × 6.	R. H. " " each	1	0	0
M	111 × 16.	Nuts for Straps each			2
S	83 × 7.	Chassis Eyebolt for Outer Rear Attachment Rod			9
	148 × 22.	Washer for ditto			1
M	111 × 8.	Nut for ditto			3
S	82 × 2.	Inner Rear Attachment Rod with Fork	4	8	
S	1 × 10.	Bolt for Inner and Outer Attachment Rods			6
	2039 × 8.	Nut for ditto			3
S	73 × 1.	Chassis Lug for Front Support Tube	3	3	
S	73 × 2.	Clip for ditto	4	6	
S	73 × 6.	Bolts for Clip each			4
	148 × 22.	Washers for ditto each			1
M	111 × 16.	Nuts for ditto each			2
S	2 × 4.	Front Support Tube, with Elbow and Bottom Clip fitted... ..	17	6	
S	2 × 11.	Elbow Nut for ditto			5
S	2 × 12.	Washer for Nut			2
S	73 × 9.	Bolt for Support Tube Clip			5
M	111 × 16.	Nut for ditto			2
	148 × 22.	Washer			1
S	98 × 4.5.	Bracket for Front Support Tube (Attached to Steering Head)	5	0	
S	3 × 3.	Clip for Bracket	2	0	
S	3 × 13.	Bolt for Clip each			5
S	104 × 5.	Front Springs each	3	0	
S	104 × 4.	Top Clip for ditto			3
S	104 × 8.	Bolt for Top Clip			4
S	104 × 7.	Washer for ditto			1
M	111 × 16.	Nut for ditto			2
S	104 × 6.	Bottom Clip			2
S	104 × 9.	Bolt for Bottom Clip			3
	654 × 9.	Nut for ditto each			2
S	78 × 8.	Body Clamping Plate (Bottom)			3
S	123 × 2.	Front Packing Piece (Wood)	1	3	
S	123 × 1.	Rear " " " "	1	3	
S	78 × 9.	Top Clamping Plate " "			3
		Coach Bolt and Nut for ditto			3
S	100 × 3.	Rear "C" Springs each	15	0	
S	100 × 2.	Link for Rear Spring			6
S	3 × 11.	Bolt for ditto			6
	148 × 22.	Washer for ditto			1
M	525 × 10.	Nut for Bolt			3

REPAIRS.

Side-Cars.

	£	s.	d.
Re-enamelling Side-Car Chassis complete	1	5	0
Re-setting Main Member (1913-21) Chassis and Re-enamelling	1	10	0
„ Spring Carrier „ „ „ „	1	7	6
„ Luggage Grid „ „ „ „	1	7	6
„ Main Member, Fitting New Axle and Re-enamelling (1913-21)	2	2	0
„ „ „ „ „ „ (1922-23)	2	16	9
Re-painting, including Taking Down & Re-assembling, and fitting Transfers			
(Touring Model)	2	15	0
Ditto (Light Model)	1	15	0
Ditto (Sporting Model)	2	5	0
Cleaning and Re-painting Body, and Re-enamelling Chassis, including Taking			
Down and Re-assembling (Touring Model)	4	0	0
Ditto (Light Model)	3	0	0
Ditto (Sporting Model)	3	10	0
Re-painting and Upholstering Body, Taking Down & Re-assembling			
(Touring Model)	8	0	0
Ditto (Light Model)	6	10	0
Ditto (Sporting Model)	7	10	0
Cleaning, Re-painting & Re-upholstering Body, and Re-enamelling Chassis			
including Taking Down and Re-assembling (Touring Model)	9	5	0
Ditto (Light Model)	7	15	0
Ditto (Sporting Model)	8	15	0

Miscellaneous.

Re-setting and Re-enamelling Rear Stand	3	6	
„ „ „ Front „	2	9	
„ „ „ Carrier	3	6	
Re-covering Handle-bar with Celluloid and Re-plating Lug and Stem	10	6	
Re-boring Cylinder and supplying and fitting New Piston with Gudgeon Pin			
and Rings	1	17	6
Supplying and fitting Repair Size Rings to Piston... .. per ring	2	3	
Machining-grinding Exhaust Valve	1	0	
Re-facing Multi Pulley Flanges per ring	3	9	
Re-building Multi Rear Wheel with Double Butted Spokes	1	10	0
„ Front Wheel... ..	8	9	
Fitting New V Lugs to Double Carrier Stays each	3	0	

Overhauling Complete Machine, including Taking Down, Cleaning, Setting,			
Re-assembling, Re-enamelling, Re-plating and Celluloid Covering	11	0	0
Stripping Complete Machine, Cleaning, Overhauling and Re-assembling	4	0	0

NOTE.—This does not include the replacement of any worn or broken parts. Should any replacements be found necessary when machine is taken down, a further estimate will be submitted, and the work held in abeyance pending acceptance.

Rudge Motor Bicycle Guarantee.

A condition of the sale of every Rudge Motor Bicycle or part of same is its guarantee, which is as follows:—

We hereby guarantee that if any defect should appear within three months of the date on which the Motor Bicycle or part was invoiced by us we will make good or replace the defective part free of charge.

This guarantee is given in place of and expressly excludes any implied guarantee, statutory or otherwise. The damages for which we accept responsibility are limited to the making good or replacement of any defective part. We do not undertake to replace or refix or bear the cost of replacing or refixing such new part in the Motor Bicycle. This guarantee does not apply to:—

- (a) Defects caused by improper adjustments, dirt, misuse or neglect;
- (b) Any machine which has had our trade mark, serial numbers or other marks removed from any part;
- (c) Any machine let out on hire, bought second-hand, or at a price below that quoted for its type in our catalogue current at the time of purchase;
- (d) Any machine not bought direct from us or from one of our duly Authorised Agents;
- (e) Any specialities of other firms such as tyres, saddles, belts, magnetos, carburettors, etc.

All such excepted machines and parts are excluded from any guarantee of any kind whatever, and are used at the owner's sole risk.

CLAIMS UNDER GUARANTEE.

Any part sent to us for replacement under the guarantee must be forwarded, carriage paid to Rudge-Whitworth, Ltd., Dept. M.C., Coventry, for inspection. A letter by post must advise the sending, and state the number of the machine to which it belongs, the date and place of purchase, and particulars of the manner in which it is supposed to be defective. If such part is found by our experts to be in any way defective, it will be immediately replaced or made good free of charge and returned carriage forward. Postage or carriage paid will be charged to the customer.

We do not undertake to replace or refit, or bear the cost of replacing or refitting, such new part in the Motor Bicycle, and all mechanic's time will be charged for.

No notice can be taken of unadvised articles, which will lie here at sender's risk.

Rudge-Whitworth Motor Bicycle Depots.

LONDON	230 Tottenham Court Road, W.1.	2303 Museum
BEDFORD	101a Midland Road ...	475
BIRMINGHAM	145 Corporation Street ...	869 Central
BRISTOL	61 Queen's Road ...	1887
BRIGHTON	134a Western Road ...	5876
DERBY	4 Babington Buildings ...	1095
EASTBOURNE	10 Terminus Road ...	1292
EXETER	28 Sidwell Street ...	228
HULL	46 King Edward Street ...	1628
LEEDS	49-57 Guildford Street ...	24531
LEICESTER	25b Humberstone Gate ...	3271
LIVERPOOL	89 Bold Street ...	2582 Royal
MANCHESTER	192 Deansgate ...	3632 Central
NEWCASTLE	66 Clayton Street ...	04966
NOTTINGHAM	12 & 14 Chapel Bar ...	3252
NORWICH	106 Prince of Wales Road ...	1022
PRESTON	150 Church Street ...	161
SHEFFIELD	111 Pinstone Street ...	2770
SUNDERLAND	28 & 29 Vine Place, Borough Road	710
WOLVERHAMPTON	17 Victoria Street ...	459
CARDIFF	94 St. Mary Street ...	859 National
EDINBURGH	13 & 14 Greenside Place ...	2326 Central
GLASGOW	118-120 Bothwell Street ...	2487 Central
	Tel.—Rudge, Glasgow	
DUBLIN	1 Stephen's Green ...	
	Tel.—Rudge, Dublin	

Index.

	PAGE
Foreword	1
499 c.c. ENGINE.	2—8
998 c.c. ENGINE.	8—12
750 c.c. ENGINE (Long Stroke).	13
Multi Gear and Clutch Group	14
Multi Operating Parts	14
Three Speed Gear Box Group	15—18
Four Speed Gear Box	19—24
Frame Group	25—26
Front Mudguard Group (Multi & Chain Drive)	25—26
Rear Mudguard Group	25—26
Stand Group (Multi & Chain Drive)	25—26
Rear Carrier Group	26—27
Silencer Group, 998 c.c. Engine (Chain Drive)	27
" " 499 c.c. Engine	28
" " 750 c.c. Engine	28
Front Fork Group	28—29
Front Brake Group (Multi)	30
Handlebar Group	30—31
Front Brake Group (Chain Drive)	30—32
Rear Brake Group (499 c.c. Chain Drive)	32
" " (998 c.c. Chain Drive)	32
" " (Multi)	34
Footboard Group (Chain Drive)	34
Footrest Group (Multi, Front)	35
" " (T.T. Multi, Rear)	35
Peddalling Gear Group (Multi)	36
Petrol Tank Group	37
Oil Tank Group (Chain Drive)	38
" " (Multi)	38
Wheel Group (Multi)	40
Side-Car Dished Wheel	41
Interchangeable Wheels (Chain Drive)	42—43
Tool Bag and Kit (Chain Drive)	44—45
Tool Bags (Multi)	44—45
Chain Guard Group	44
Light and Touring Side-Car Chassis	46—47
Side-Car Body Fitments	47
REPAIRS.	
Frame Front	48
Frame Back	48
" " (T.T.)	48
" " (Chain Drive)	48
Front Fork	48
Tanks	48
Side-Cars	49
Miscellaneous	49
Rudge Motor Bicycle Guarantee	50
Rudge-Whitworth Motor Bicycle Depots	51

