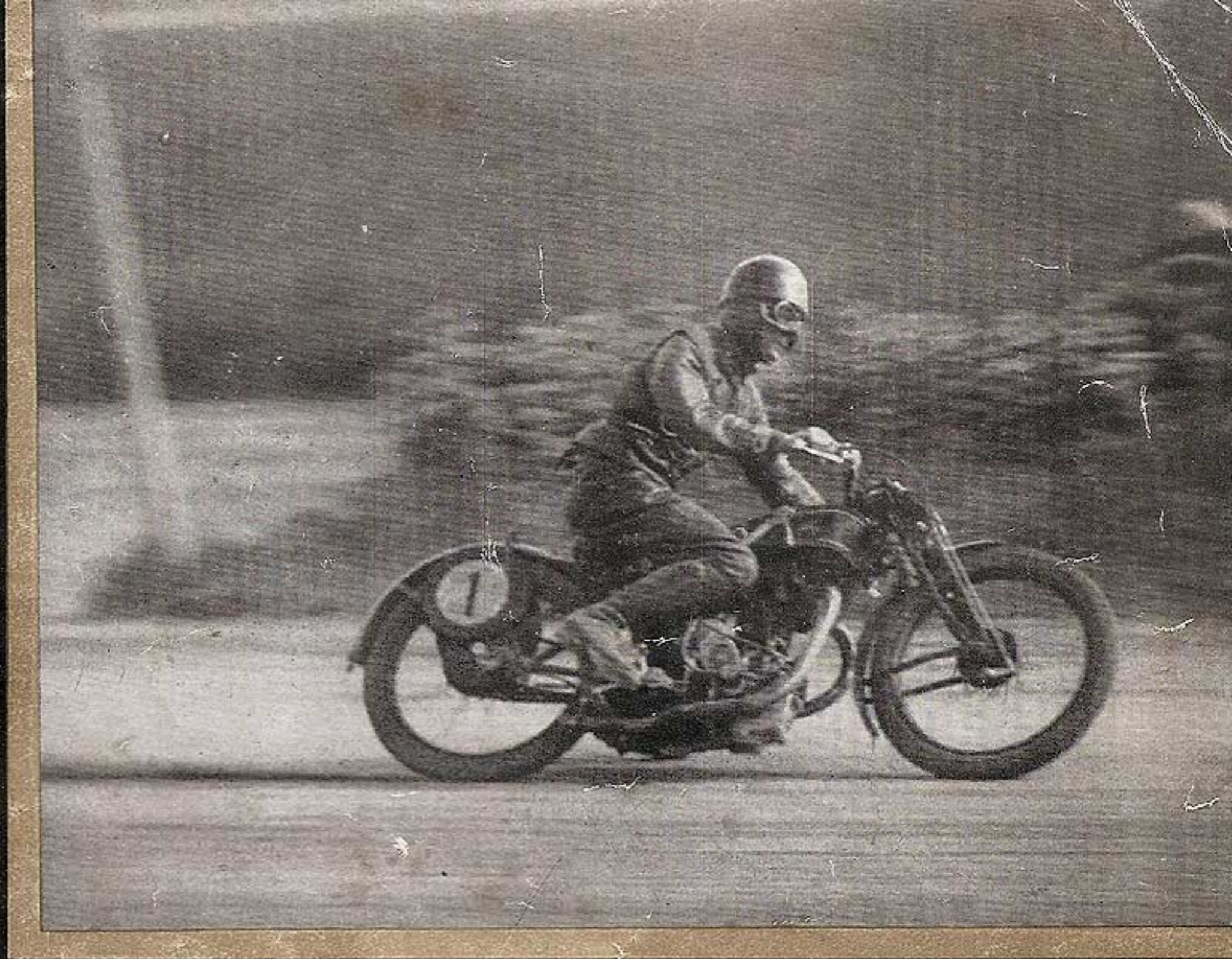
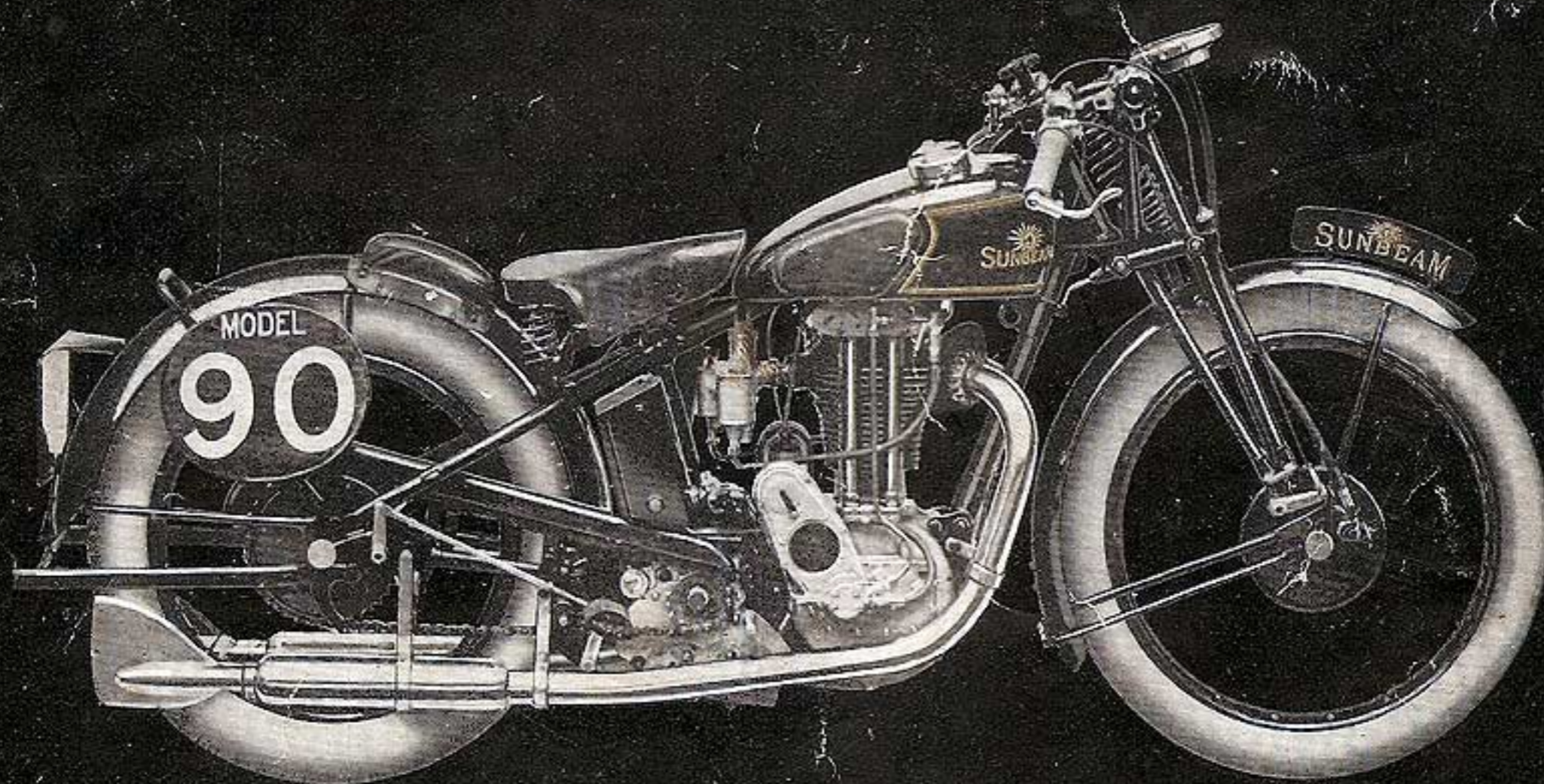


M
O
O
D
D
E
E
L
L



90 SUNBEAM



FOUR TIMES WINNER OF THE SENIOR T.T.

THE MODEL 90 SUNBEAM

SPECIFICATION

ENGINE. Sunbeam single cylinder, 493 c.c. racing two-port O.H.V. enclosed rocker gear, push rods and valve guides lubricated automatically under pressure. Sunbeam patent double hairpin valve springs and high compression piston fitted. Tappet adjustment direct to stem of valve. Exhaust valve lifter operated by cable from handlebar. Adjustable dry sump lubrication system (Pat. No. 290413) with oil gauge on tank. Sunbeam shock absorber on engine shaft. Special racing double float chamber Amal carburettor with twist grip control. Auxiliary air control. Large exhaust pipes with Sunbeam patent silencers with fishtails.

GEARBOX. Sunbeam four-speed. Close ratio racing gears. Gearbox lubricated through accessible filler. Level plug provided. Draw bolt attachment for adjusting front chain. Sunbeam six-spring hand-operated clutch with Ferodo insets. Foot-operated gear change. Front chain totally enclosed.

GEAR RATIOS. Standard gears 4.6 to 1, 5.6 to 1, 6.7 to 1, 9.6 to 1.

TYRES. Back, Dunlop 26 in. x 3.25 in. wired on. Front, Dunlop 27 in. x 2.75 in. wired on. Well fillers fitted to both wheels.

IGNITION. Special racing Lucas magneto.

FRAME. Low riding position with extra large saddle tank and separate oil tank. Sunbeam adjustable sports type handlebars with Sunbeam steering damper. Terry saddle. Large tool bag fitted on left-hand chain stay. Rear mudguard cushion. Adjustable racing type footrests.

PETROL AND OIL TANKS. Fitted with large quick-acting filler caps. Special racing type knee grips giving wide range for riding position.

WHEELS. Detachable and interchangeable. Brakes remain in place when wheels are removed. Hubs fitted for grease gun lubrication. Wheels are balanced.

MUDGUARDS. Light pattern guards with special stays. Rear guard fitted with lifting handle and hinged rear section to permit removal of back wheel.

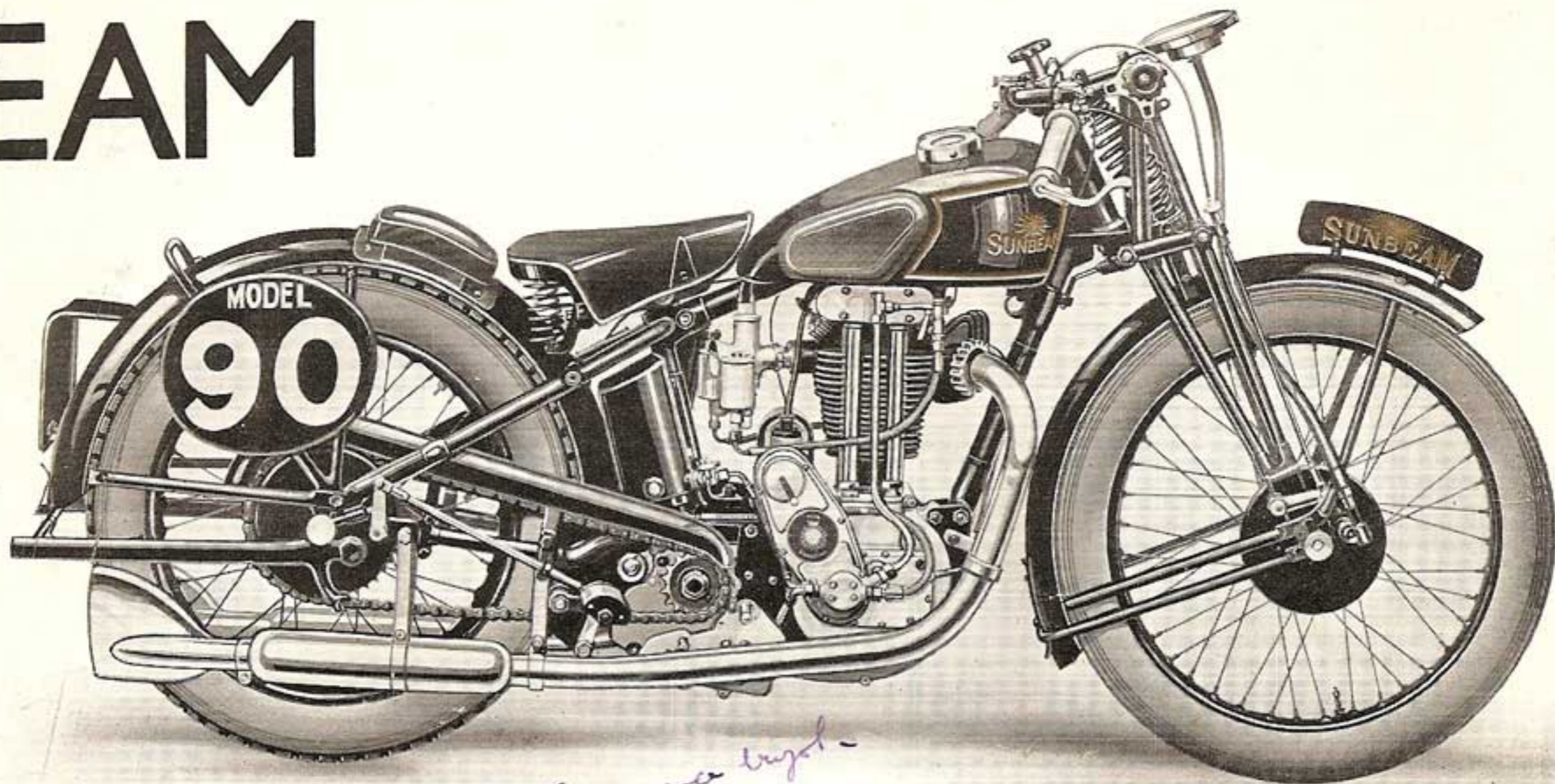
FRONT FORK. Sunbeam front fork with central spring and Sunbeam adjustable shock absorber. Lubricated by grease gun system. Front wheel stand.

MEASUREMENTS. Bore: 80 mm. Stroke: 98 mm. Cylinder capacity: 493 c.c. Petrol capacity, 3½ gall. Oil capacity: 6 pt. Compression ratio: 7½ to 1.

SPEEDOMETER. Special speedometer fitted on top of fork girder with enclosed drive inside front brake drum.

THE SU

SUNBEAM



guarantee 155 km. - engine 1000 cc -

13.000/-

PRICE £90

or £22 10s. deposit and 12 monthly payments of £6 1s. 6d.

SUNBEAM BLACK WEATHERPROOF FINISH WITH BRIGHT PARTS CHROMIUM PLATED. SADDLE-TANK BLACK ENAMELLED AND GOLD LINED. OIL PRESSURE GAUGE FITTED ON TOP OF TANK

EXTRAS

LIGHTING. Lucas Magdyno where electric lighting is fitted, with 7½ in. head lamp and tail lamp. £5 10s.

EXHAUST PIPES. T.T. exhaust pipes for racing only, available to order.

GEAR RATIOS. For sidecar work the following can be fitted to order: 5.3 to 1, 7 to 1, 10.1 to 1, 15.9 to 1. Alternative compression ratios: 7 to 1, 9 to 1.

THIS MODEL IS OBTAINABLE WITH KICKSTARTER AND HAND GEAR CHANGE TO ORDER

FOR SUNBEAM GUARANTEE SEE GENERAL CATALOGUE

UPREME RACING MOTOR CYCLE

JOHN MARSTON LIMITED

SUNBEAMLAND

WOLVERHAMPTON



SPECIAL FEATURES

- 1 CLOSE RATIO SILENT FOUR-SPEED GEARBOX.
- 2 VALVE ROCKERS AND GUIDES LUBRICATED FROM OIL SUPPLY UNDER PRESSURE.
- 3 INTERCHANGEABLE DETACHABLE BALANCED WHEELS.
- 4 NON-DETONATING TURBULENT CYLINDER HEAD.
- 5 SELF-ENERGISING BRAKES.
- 6 COMPLETE ROAD RACING SPECIFICATION.

NOTE.—The makers reserve the right to make, without notice, such alterations in prices or specifications as they may from time to time deem necessary.